

# ATLAS

# ATLAS

MADE IN GERMANY. SINCE 1919.



<b>OPERATING WEIGHT</b>	<b>18.5 – 19.5 TONS</b>
-------------------------	-------------------------

<b>ENGINE POWER</b>	<b>115 KW</b>
---------------------	---------------

<b>BUCKET CAPACITY</b>	<b>0.7 – 1.3 M<sup>3</sup></b>
------------------------	--------------------------------

# ATLAS FOR HIGHER EFFICIENCY.

Experience the culmination of over 100 years of expertise: a perfected design, meticulous attention to detail, and engineering built to last. As a highly efficient and competent manufacturer of premium construction machinery in Germany, ATLAS develops loader cranes, excavators, and material handlers – **all custom-built to exacting specifications**. ATLAS is the machine of choice for the toughest applications and for those who demand uncompromising quality.

**ATLAS POWER OF INNOVATION.**

**MADE IN GERMANY.**

“For more than a century, our highly motivated employees have devoted themselves to the design and manufacture of tailor-made excavators and cranes that serve to increase productivity while simultaneously lowering your total cost of ownership. The proof of our dedication is reflected in working tenaciously every day in order to create innovative solutions for both old and new challenges. This tradition, which extends over generations, demonstrates our continuous commitment to developing high-quality machines that meet the ever-changing requirements and challenges of our time.”



**Brahim Stitou, CEO**



Best  
Value  
Investment



# BUILT RIGHT.

**STATE-OF-THE-ART SOLUTIONS TAILORED TO YOUR SPECIFIC NEEDS.  
ECO-FRIENDLY, VERSATILE, AND EASY TO OPERATE.  
ATLAS CONSTRUCTION MACHINERY – MADE IN GERMANY –  
FOR MORE THAN 100 YEARS .**

## // We aim to impress...

Our 100 years of experience has taught us to think big in order to succeed. Our success lies in the combination of productivity, efficiency, and technological supremacy gleaned from carefully listening to our customers. From standard models all the way to custom-engineered designs – we have the best solution for any challenge.

We utilize state-of-the-art ideas and innovative concepts for construction machinery that meets the highest standards in a wide range of applications.

The result is indeed impressive: our unique 175Wsr.

<b>OPERATING WEIGHT</b>	<b>18.5 – 19.5 TONS</b>
<b>ENGINE POWER</b>	<b>115 KW</b>
<b>BUCKET CAPACITY</b>	<b>0,7 – 1,3 M<sup>3</sup></b>



# THAT'S WHAT AN ATLAS IS ALL ABOUT.

## HIGHER EFFICIENCY

Perfectly matched components make the powerful engine run at top performance. The ATLAS 175Wsr features **a long service life, low fuel consumption, and impressive performance.**

## USER-FRIENDLY SERVICE

When developing the ATLAS 175Wsr, we made maintenance easy. **Easily accessible components** reduce downtime as well as maintenance cost and allow for fast replacement should the need arise. The **optional telemetric system** provides all relevant data of the machine.

## UNIQUE UNDERCARRIAGE DESIGN

Our custom undercarriage design combined with an enhanced, powerful drive motor, **maximum stability**, and **excellent off-road performance** excels in a variety of conditions.

## OPTIMUM SAFETY

A large cab door and non-slip steps ensure **safer access to the cab**. The cab's **lighting** increases visibility. **ROPS and FOPS safety measures** are incorporated in the cab design to protect your most valuable asset – your people.

## POWERFUL HYDRAULICS

With the efficient hydraulics, operators can literally feel the **power** of our 175Wsr. maximum output very fast. Our full pilot controls allow effortless changing from demanding tasks **at full speed to precision tasks with ease** – even under load.

## UPTIME – ALL THE TIME

We combine **high-quality components** matched to our demanding specifications with a **robust design** – the result is a reliable machine with predictable performance. Our **telemetric system** provides all relevant data to help companies see what's happening.

## A CAB FOR ALL

A spacious cab with the perfect combination of ergonomic controls and operating comfort featuring **outstanding visibility** for higher safety, **air conditioning for clean cool filtered air**, as well as an **ergonomically adjustable seat** to reduce work fatigue.

## ATTACHMENTS DESIGNED AND BUILT IN HOUSE

Our in-house designed **attachments** allow for **greater flexibility** and tailored solutions and are built to last. Our **quick-coupling system** originates from our production as well.





# COMPACT. AGILE. AND QUIET.



## EXCELLENT MANEUVERABILITY IN CONFINED SPACES

With a swing range of 1.72 meters, this agile excavator is perfectly suited for any job. Whether in difficult terrain or on the most confined construction sites, the ATLAS 175Wsr sets the bar for maneuverability very high and **makes it the best in its class!**



## BOOM WITH VARIOUS WORKING LENGTHS

Always the ideal working length! The ATLAS 175Wsr is widely useful: From short booms for precise operation all the way to longer booms for more reach, ATLAS excavators adapt to any need – no challenge is out of reach!



## LOW NOISE LEVEL – IN AND OUT

The special sound-proofing of the cab produces a quieter and healthier workplace, allowing increased focus for the job at hand. Our bearings and engines emit reduced sound levels as well, making it a better place to work for those inside and outside the cab.



1,72 Meter

The shortest swing range  
of its class!



# A LEADING EDGE IN EVERY DETAIL.

**ADMITTEDLY, WE ARE A BIT PROUD: THE ATLAS 175WSR IS THE TAILOR-MADE RESPONSE TO CUSTOMER REQUESTS AND FUTURE REQUIREMENTS. THIS MACHINE IS THE RESULT OF MANY YEARS OF PASSIONATE DEVELOPMENT.**

Our goal: Besides allowing for increased productivity, a better and superior safety, we aim to create a powerful and agile machine in a compact format that thrives in any environment. With the ATLAS 175Wsr, we achieved this and again adopt a front-runner approach at "standard customized" solutions.

This machine is strong, sensitive, maneuverable, and stable, as well as comfortable and safe. Guided by a commitment to quality and without compromise, we left nothing to chance.

Consistent design engineering, applied throughout from boom to accessories and down to the smallest detail, produced this impressive result!



## UNOBSTRUCTED VIEW

### // Cab with 360° visibility

The large-scale glazing of the cab with a very large front window, undivided side window panes that angle down, and a low-slung rear window ensures that the operator has an unobstructed 360-degree view of the working environment. This makes the cab an ergonomic and safe workplace that supports precise operation.



### // Rear view camera

Rear and right-side cameras for monitoring the surroundings are standard. When rotating the machine, in particular in confined spaces, you can see everything all right from the screen. **SAFETY!**



### // Easy-to-read camera display

A large and easy-to-read camera display, without unnecessary details, makes it easy to see and control in all weather conditions.



# EASY ACCESS FOR SERVICE



## // Easy maintenance

A service-friendly machine design with large wide-opening service panels lowers operating costs by allowing for easy access to all the major components. **All service points**, such as measuring points, filter exchange, and cleaning of cooling surfaces, **are readily accessible**.



# RUNNING SMOOTHLY



## // Central lubrication points

All necessary lubrication areas are easily accessible as well.

# EVERYTHING ON BOARD



## // Trailer hitching device

With the trailer hitching device, the ATLAS 175Wsr can tow trailers of up to 3 tons – with overrun brake even up to 8 tons, allowing to take along all tools and the required equipment to the job location.

# STOWED WELL



## // Tools always on board

The toolbox on the undercarriage allows for ergonomically storing the right tools at the right place for faster response.

# EFFICIENT OPERATION



## // Automatic service brake

Thanks to the automatic service brake, work can start right away after stopping. Service brake and axle lock are automatically activated as soon as the machine is at a standstill.



# FEEL GOOD CAB

**WITH ONE OF THE INDUSTRY'S MOST COMFORTABLE WORKPLACES, ATLAS CABS FEATURE 360-DEGREE PANORAMIC VIEWS, EASY-TO-READ GAUGES, ERGONOMIC CONTROLS, LOW NOISE LEVELS, AND EXCELLENT VENTILATION.**

Get on board, get comfortable, and get started! The cabs of our agile and powerful ATLAS 175Wsr are the envy of the industry.

Special emphasis is placed on clear arrangement, health, comfort, and functionality. With non-slip steps and wide access, our cabs are easy to enter and exit.

The seat is ergonomically designed, made from premium materials, and available in various designs – from the pneumatic suspension, lumbar support and headrests to individual adjustments, our seats keep the operator comfortable. And for those cold days and nights, heated seats are standard.

The comfort doesn't end there. Ranging from the adjustable control panel and the ergonomic joystick, all control levers and switches are within reach. The automatic climate control not only provides for cooling but also ensures warmth in any environment. With our superior filtration system, both the cab and the operator are safe with clean dust-free air. All of this is easily controlled via the display.

In this state-of-the-art and fully-equipped cab, all control levers are clearly arranged.

The large-scale glazing of the cab ensures that the operator has an unobstructed view of the working environment. This makes the cab an ergonomic and safe workplace that supports precise operation all day long.







**A CAB DESIGNED  
PERFECTLY  
FOR EVERYONE**





#### // Multifunctional panel

Small, clearly arranged and made for quick access. The optimized design of the push buttons and switches makes our machines easy to operate.



#### // Air conditioning

Our advanced design and ventilation system provides clean air at the right temperature.



#### // Monitor with side and rear-view camera

The monitor ensures maximum safety thanks to a bright screen – in particular when rotating and working in confined spaces.



#### // Smartphone tray with USB port

Stay connected and charged while working.



#### // Non-slip flooring

Our floors are slip resistant and ensure secure footing, even if you are in a hurry.



#### // Comfortable joystick

With a simple uncluttered design, our joystick moves ergonomically with the seat – and fits any hand.



#### // Bottle holders

Like any modern vehicle, our cabs include space for your drinks within easy reach to stay safe and hydrated.



#### // Cooler

The integrated cooler with electrical hook-up – very convenient for storing the day's provisions.



#### // Stow-away front window

The lower part of the front window can be opened and easily stowed for those times that clear visibility or direct communication is needed for safety.









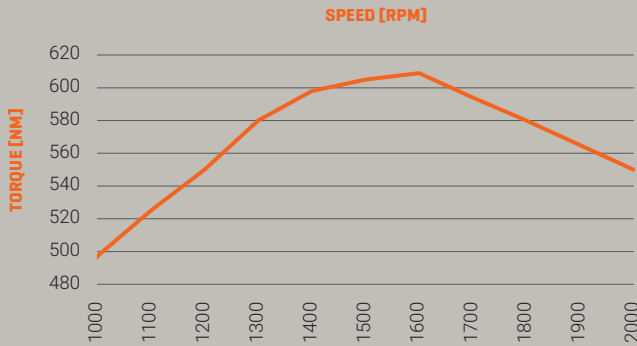
## ENGINE



**Deutz**  
**// TCD 4.1 L4 – intelligent and efficient**

Since ATLAS was established, we are convinced of the quality of Deutz engines. This is why the water-cooled 4-cylinder inline engine with turbocharging and with charge air-cooling and exhaust after-treatment (EAT) is the key component of the 175Wsr, too. The powerful Deutz Common-Rail (DCR®) high-pressure injection system and electronic engine control (EMR 5) with smart connection to the drive management ensure highest engine performance at lowest consumption.

**// Compliance with emission standards:**  
EU-stage 5 and US EPA Tier 4 with  
DOC / DPF / SCR TIER IV final and EU-stage 5.



## HYDRAULIC SYSTEM



**Bosch Rexroth**  
The hydraulic system ensures quick response times by providing maximum utilization of the available engine performance and yet, the Bosch Rexroth hydraulic system provides movements independent of the load via an electronically controlled pump and load-independent flow distribution (LUDV). This intelligent performance control ensures high flow distribution, combined with proportional work functions.

For enhanced efficiency, the hydraulics feature multiple work modes selectable from inside the cab. For maximum operating performance, a power boost is available as well.

## AXLES



**ZF**  
The combination of frame, axles and transmission provides the perfect consolidation of power and enhanced stability, while the robust frame structure ensures higher uptime and a long service life of the machine.

The heavy-duty axle includes a lock for driving across a variety of terrain. The pendulum axle design can be controlled automatically or manually.

## ATTACHMENT TOOLS



**ATLAS**  
ATLAS offers a wide range of attachment tools for the most diverse requirements – all designed **by us**.

This provides you with plenty of benefits:

**Very wear-resistant** – thanks to the use of high-tensile steels and a solid construction.

**Maximum efficiency** – all attachment tools are specifically designed for your excavator model and will fit perfectly.

**Certified** – according to the applicable safety standards

**Guaranteed** – with full warranty coverage and support

**Added value** – enhanced resale value

It has been proven: The use of high-quality attachment tools can help to reduce fuel consumption and emissions, aiding the environment.

## SWING SYSTEM



**Thyssen Krupp – Rothe Erde**  
Thanks to internal gearing and sealed ball bearings, the ball bearing slewing ring from Rothe Erde is an ideal and cost-effective solution. The design is resistant to major torque fluctuations at all times.

Scan QR code to go directly  
**to the attachment tools:**



# TECHNICAL DATA

## ENGINE

Power gross (ISO 14396)	115 kW
Model	Deutz TCD 4.1 L4 EU Stage V
Type	Turbocharger / intercooling
Displacement	4038 cm³
Number of cylinders	4
Bore / stroke	101 / 126
Cooling system	water-cooled
Air filter	Dry air filter
Battery	2 x 12 V / 100 Ah
Generator	24 V / 100 A
Starter	24 V / 4 kW
Standard basic equipment	automatic idling system/engine stop Cold start assistance Diesel pre-filter Engine monitoring

## HYDRAULIC SYSTEM

AWE 5 System (Load Sensing)	
Load-limit controlled high-performance pump	
Fuel-efficient flow-on-demand control	
Sensitive, proportional, independent control	
Primary and secondary protection against overload	
Suction valves for all work functions	
Holding valves for lift and articulated cylinders	
Proportional grab and grab rotating function	
Three additional circuits for auxiliary consumers possible	
max. 260 l/min flowrate	
max. 350 bar operating pressure	
Cylinder end position damping	
Operating modes	F1 (Fine) F2 (Eco) F3 (Power)
Accumulator for emergency lowering of the arm system	
Load-limit control	

## SWING SYSTEM

Axial piston motor with priority valve	
Planetary transmission	
Automatically controlled multi-disc parking brake	
Two-stage valves	
Slewing torque	41 kNm
Upper structure rotation speed	9/min

## TRAVEL DRIVE + BRAKES

Variable speed drive motor	
Powershift transmission	
Double-acting brake valve	
Travel direction pre-selection via switch on joystick	
Automotive traveling and cruise control	
Max. speed	20 km/h
Off-road speed	5 km/h
Crawling speed	3 km/h
Traction	108 kN
Gradeability	64 %
Dual-circuit brake system	multi-disc
Parking brake	multi-disc

## UNDERCARRIAGE

Steering axle with manual and automatic pendulum axle locking	
Additional axle locking via left joystick	
Heavy-duty axles	
Toolbox on undercarriage	
STD tires: Mitas 10.00-20 16PR EM23	

## VIBRATION EMISSION \*

Hand-arm-vibrations	< 2,5 m/s²
Whole-body vibrations	< 0,5 m/s²
Measurement uncertainty according to standard EN 12096:1997	

\* For assessment of hazard exposure acc. to 2002/44/EG, see ISO/TR 25398:2006

## CAB

Complies with latest safety standard (ROPS)	
Extra-wide access	
Ample legroom	
Radio kit with mute function	
Installation kit for thermoelectric cooler	
Various storage options, document compartment	
Thermal insulating glazing, windows tinted	
Excellent panoramic view	
Driver's seat	Comfort seat with headrest
	Arm rests and lumbar support
	Seat adjustable independent of console
	Air-suspended
	Heated
	Horizontal and vertical suspension
	Lumbar support
Control	Ergonomic joysticks with proportional slide
	Slim steering column with adjustable height and tilt
	Switches clearly arranged on the control panel
	Pendulum axle locking on the left joystick
Monitoring	Operating data indication via display
	Automatic monitoring, warning, and storage
	Rear area monitoring camera
	Side-view camera, right-hand side
Air-conditioning	Automatic climate control
	Excellent air distribution due to optimally arranged nozzles
	Refrigerant R134a
Sound level	ISO 6396 (LpA) inside driver's cab: 70 dB(A)
	2000/14 EG (LwA) ambience level: 97 dB(A)

## TIRES (OPTIONAL)

Tires (x4) 600/40– 22.5 14PR Mitas
Tires (x4) 600/40 – 22.5 18PR Alliance
Tires (x4) 710/40 – 22.5 24PR Nokian
Tires (x8) 10.00-20 16PR Nokian
Tires (x8) 10.00-20 16PR Tread for use on asphalt
Tires (x8) 10.00-20 Super-elastic (up to 16 km/h)
Tires (x8) 315/70 R22.5 Bandenmarkt, Grader type
Tires (x8) 215/70 R22.5 Caliber Power Grip 23

## REFILL CAPACITIES

Fuel tank	250 liters
Cooling system	35 liters
Engine oil	10 liters
Hydraulic tank capacity	175 liters
Hydraulic system capacity	210 liters
Ad Blue®	32 liters

## OPERATING WEIGHTS\*

MONOBOOM			
4.85 m (C6.4MG)			
	Stick 2.15 m	Stick 2.65 m	
Support dozer blade	18.5 - 19.0 t	18.6 - 19.1 t	
APS / Stabilizers	19.3 - 19.8 t	19.4 - 19.9 t	
Stabilizers 4-fold	19.6 - 20.1 t	19.7 - 20.2 t	
ADJUSTABLE BOOM			
Loading Boom 1.87 m (C6.41)   Boom 3.10 m (C6.46)   Boom 3.62 m (C6.461)			
	Stick 2.15 m	Stick 2.65 m	
Support dozer blade	18.8 - 19.3 t	18.9 - 19.4 t	
APS / Stabilizers	19.6 - 20.1 t	19.7 - 20.2 t	
Stabilizers 4-fold	19.9 - 20.4 t	20.0 - 20.5 t	

\*Operating weight, incl. driver, machine filled, and 1 ton for attachment tools.

## ATTACHMENT TOOLS (SELECTION)

	Capacity SAE	cutting width
Bucket F415	0,67 m³	850 mm
Bucket F418	0,92 m³	1100 mm
Trench digger G644	0,56 m³	2000 mm



# OPTIONS

**IT'S WORTH IT: OUR ATLAS ACCESSORY EQUIPMENT  
FOR EXTRA COST-EFFECTIVENESS AND SAFETY.**

## FOR HIGHER EFFICIENCY

- Fuel pump
- Rotating beacon
- Transmission protection
- Rockfall safety guard
- Hydraulic adapter kit,  
Stabilizers can be operated for each axle separately
- Wheel cover
- Cab elevation
- Patented trailer hitching device
- Bio-oil
- Extra-wide axles (overall width 2.750 mm)
- Extra-wide dozer blade (2.750 mm)
- Sprinter 36 km/h

## DRIVER'S COMFORT

- Automatic service brake
- Proportional control of stabilizers via slider on joystick
- Synchronous electrical central lubrication system  
with monitoring function for upper carriage and boom  
equipment
- Joystick steering
- 270° camera system
- LED working lights
- 35% axle differential lock
- Driver's seat Premium (Actimo Evolution)
- Electric cooler
- Radio with USB port and Bluetooth
- Buzzer alert for drive mode
- Auxiliary heater with water circuit
- GPS/GSM telemetry box for monitoring operating data,  
consumption, position

**FOR ADDITIONAL OPTIONS,  
PLEASE SEE PRICE LIST**

**SPECIAL SOLUTIONS  
ON REQUEST**



# WE KEEP YOUR ATLAS RUNNING.

**24-HOUR SPARE PARTS SERVICE FOR IMPROVED READINESS.  
ATLAS SPARE PARTS GMBH DELIVERS ACROSS EUROPE AND AROUND  
THE WORLD. ALWAYS GENUINE PARTS. ALWAYS FAST.**

Regular checks and servicing of your machines prevents breakdowns and downtime. Exchange and replacement with ATLAS genuine parts ensure quality that pays off for our customers. Nevertheless, if you do encounter a problem, ATLAS Spare Parts will provide you with genuine parts in a short time.

ATLAS Spare Parts holds more than 50,000 parts in stock at their distribution center in Ganderkesee to ensure that your machines are ready for use again very quickly.

For customers ordering a part in Europe, it is usually delivered within 24 hours.

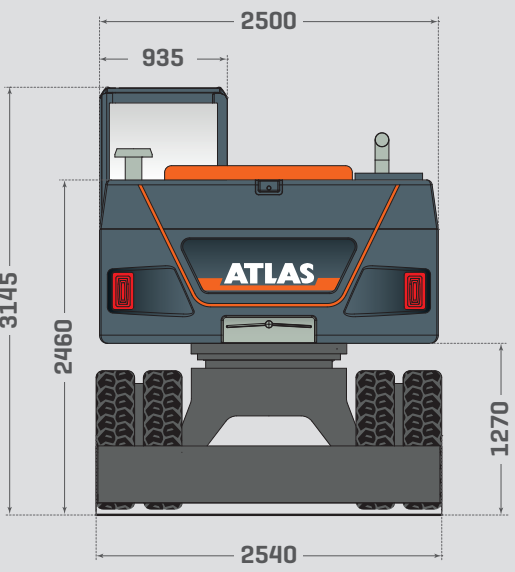
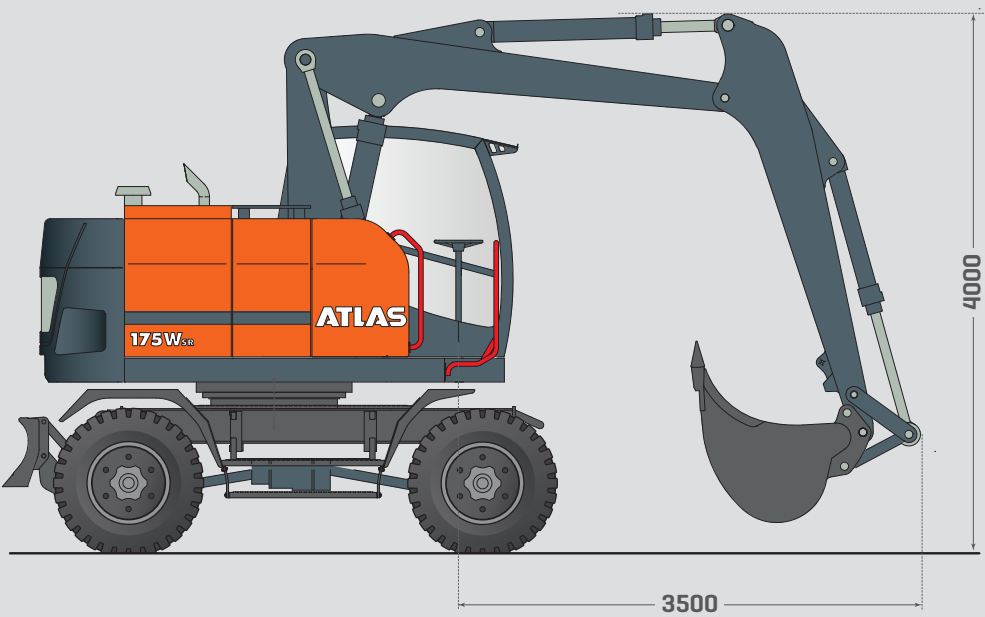
Whether it concerns parts for brand new models or machines that have been in operation for more than 40 years and beyond, our experienced teams ship quickly and worldwide. More than 200 service centers and 80 dealers provide comprehensive support – directly at your location or at the construction site. You can rely on the quality, expertise, and availability that only ATLAS Spare Parts can offer.

Please scan QR code  
to get to  
Spare Parts Service:

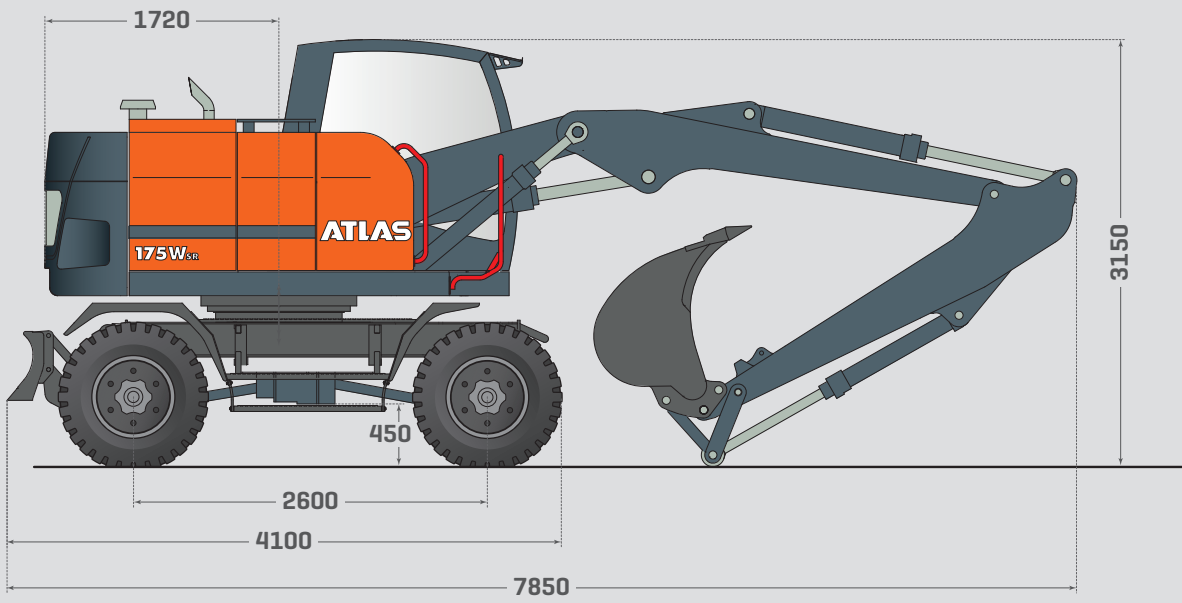




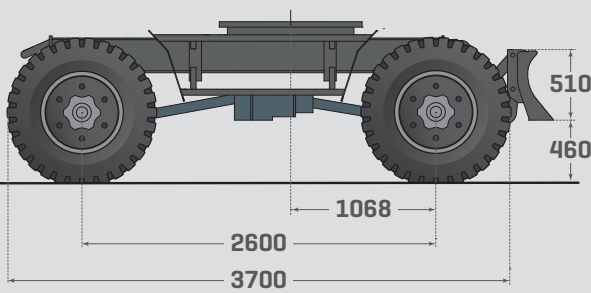
ROAD TRAVEL POSITION



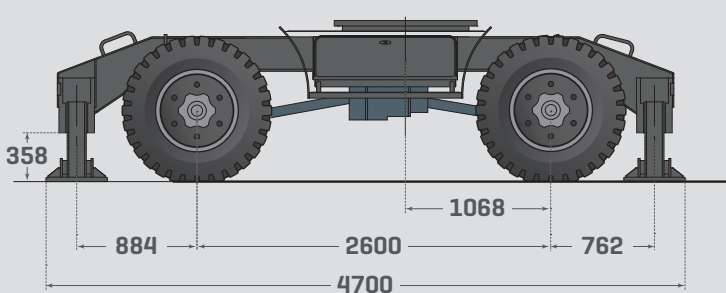
TRANSPORT HEIGHT (WITH BUCKET)



A5.2K

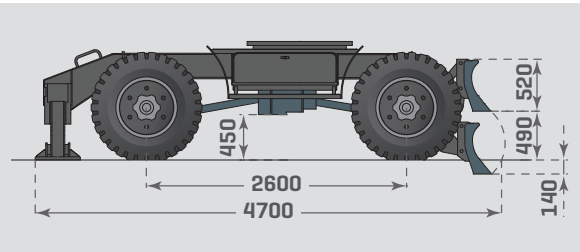


A5.32K

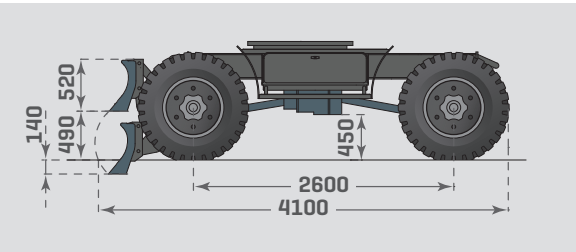


# SUPPORTS

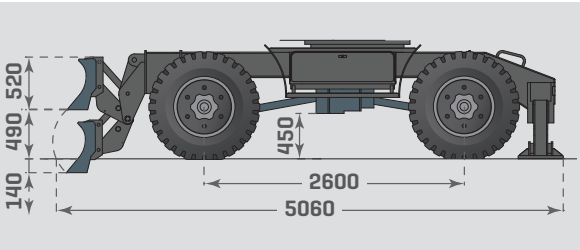
A5.33K



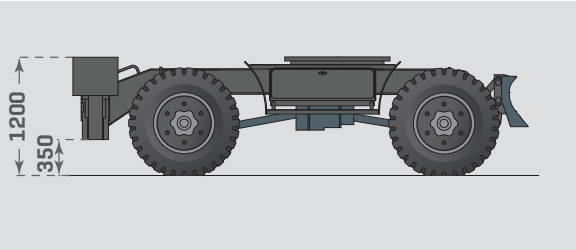
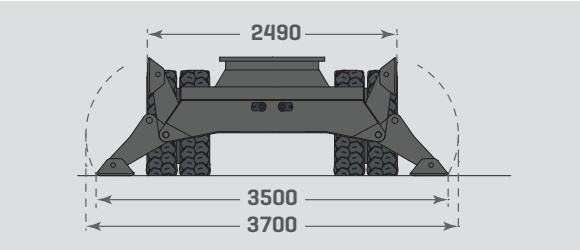
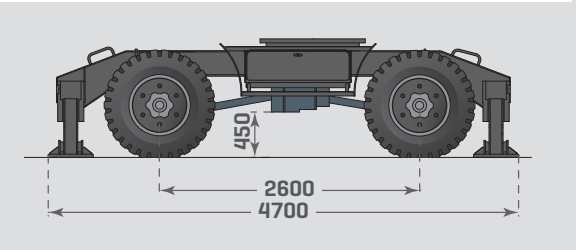
A5.2K



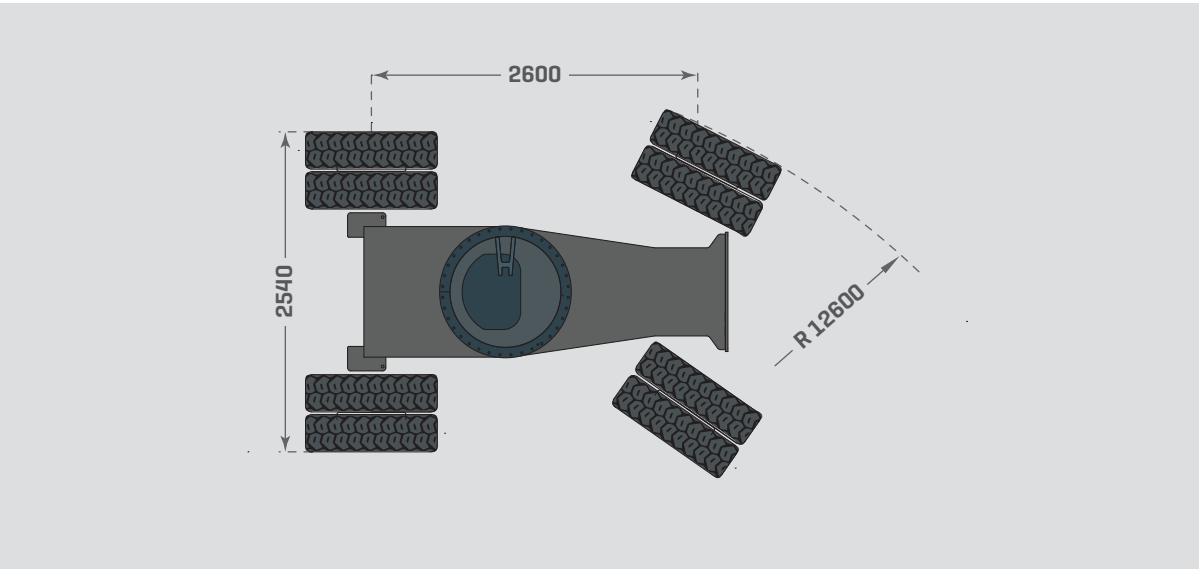
A5.35K



A5.32K

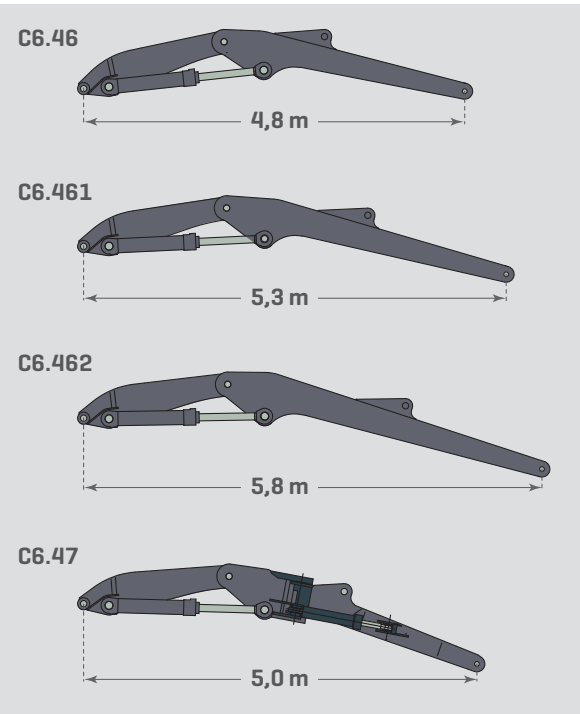


AXLE ZF 3060, TIRE 10.00-20

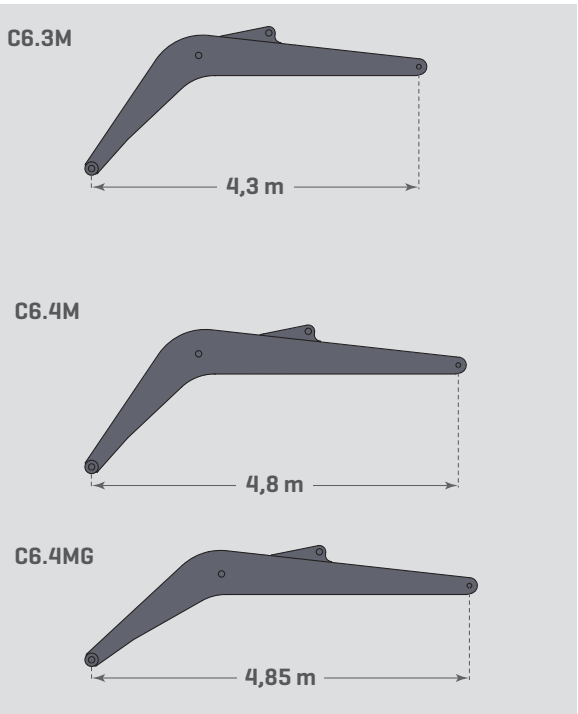


# BOOMS & ARTICULATED BOOMS

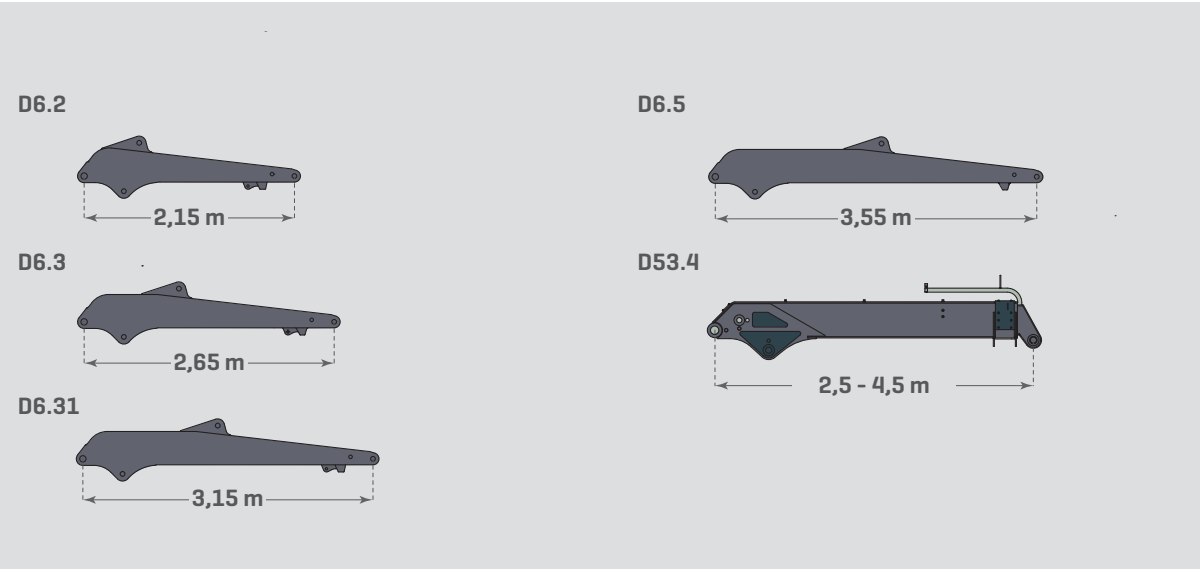
ADJUSTABLE BOOMS



MONOBOOMS

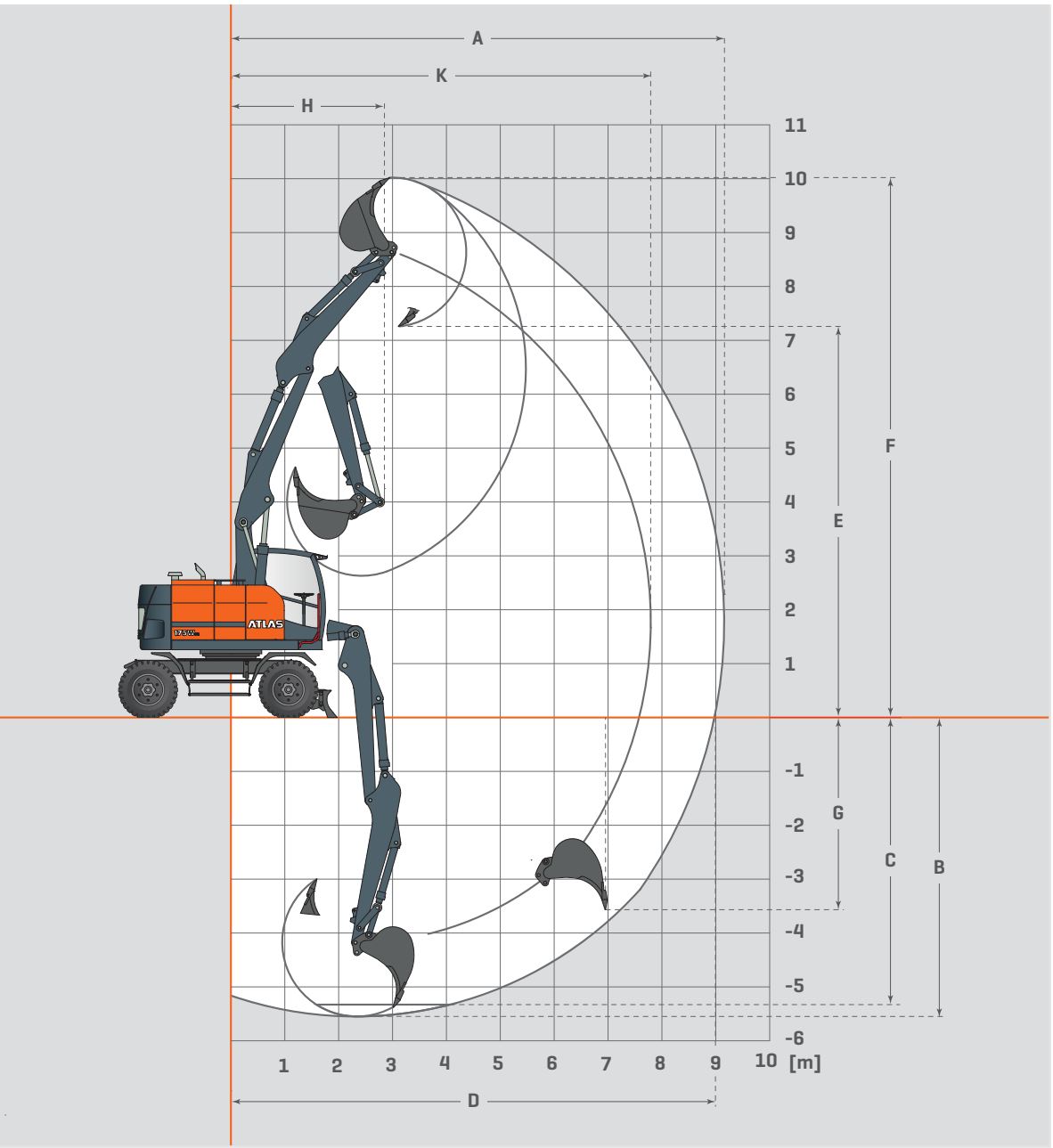


STICKS





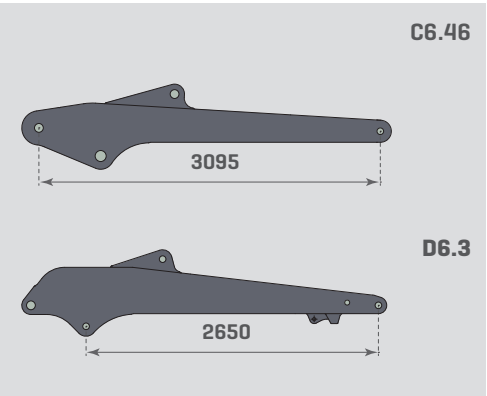
DIGGING EQUIPMENT WITH DOUBLE-ARTICULATED BOOM 4.8 M, STICK 2.65 M



DOUBLE-ARTICULATED BOOM C6.41, C6.46, STICK D6.3

	D6.3	D6.2
Dipper stick		
Dipper stick length	2.65	2.15
A Max. reach	9200	8700
B Max. digging depth	5550	5050
C Max. digging depth (l = 2.44 m level)	5350	4900
D Max. reach at ground level	9000	8500
E Max. dumping clearance	7300	6950
F Max. grooving height	10050	9600
G Max. vertical grooving depth	3550	3500
H Min. front swing radius	2850	2700
Max. reach stick	7800	7300
Max. cutting force	60	68
Max. breakout force	100	100

INFOBOX



LOAD CAPACITY WITH DOUBLE-ARTICULATED BOOM 4.8 M, STICK 2.65 M | AXLE STANDARD

	front	rear	2 m			3 m			4 m			5 m			6 m			7 m		
			L	Q+	Q	L	Q+	Q	L	Q+	Q	L	Q+	Q	L	Q+	Q	L	Q+	Q
8 m	-	Blade							5.1*	5.1*	5.1*									
	Blade	Stabilizer							5.1*	5.1*	5.1*									
7 m	-	Blade										4.6*	4.4	3.8						
	Blade	Stabilizer										4.6*	4.6*	3.9						
6 m	-	Blade										4.4*	4.4*	3.8	4.3*	3.3	2.8			
	Blade	Stabilizer										4.4*	4.4*	3.9	4.3*	4.3*	3.0			
5 m	-	Blade							5.0*	5.0*	5.0*	4.7*	4.4	3.8	4.3*	3.3	2.9	3.6*	2.5	2.2
	Blade	Stabilizer							5.0*	5.0*	5.0*	4.7*	4.7*	3.9	4.3*	4.3*	3.0	3.6*	3.6	2.2
4 m	-	Blade				6.1*	6.1*	6.1*	5.9*	5.9*	5.1	5.0*	4.3	3.8	4.5*	3.3	2.9	4.1*	2.5	2.2
	Blade	Stabilizer				6.1*	6.1*	6.1*	5.9*	5.9*	5.2	5.0*	5.0*	3.9	4.5*	4.5*	3.1	4.1*	3.6	2.2
3 m	-	Blade				8.5*	8.5*	7.7	6.8*	5.8	5.0	5.5*	4.2	3.7	4.7*	3.3	2.9	4.2*	2.5	2.2
	Blade	Stabilizer				8.5*	8.5*	7.9	6.8*	6.8*	5.1	5.5*	5.5*	3.8	4.7*	4.7*	3.0	4.2*	3.6	2.2
2 m	-	Blade	11.7*	11.7*	11.7*	10.0*	9.0	7.5	7.7*	5.8	5.0	5.9*	4.2	3.7	4.9*	3.3	2.9	4.3*	2.5	2.1
	Blade	Stabilizer	11.7*	11.7*	11.7*	10.0*	10.0*	7.7	7.7*	7.7*	5.1	5.9*	5.9*	3.8	4.9*	4.7	2.9	4.3*	3.5	2.2
1 m	-	Blade	18.5*	18.5*	15.1	11.6*	8.9	7.5	8.2*	5.8	5.0	6.3*	4.2	3.6	5.1*	3.2	2.8	4.3*	2.4	2.1
	Blade	Stabilizer	18.5*	18.5*	15.5	11.6*	11.6*	7.6	8.2*	8.2*	5.1	6.3*	6.1	3.7	5.1*	4.6	2.9	4.3*	3.5	2.1
0 m	-	Blade	20.0*	18.5	14.3	11.7*	8.6	7.2	8.2*	5.6	4.8	6.4*	4.0	3.5	5.2*	3.0	2.6	4.4*	2.4	2.0
	Blade	Stabilizer	20.0*	20.0*	14.7	11.7*	11.7*	7.4	8.2*	8.2*	4.9	6.4*	5.8	3.5	5.2*	4.4	2.7	4.4*	3.4	2.1
-1 m	-	Blade	19.7*	17.7	13.7	11.8*	8.3	6.9	8.3*	5.3	4.5	6.4*	3.9	3.4	5.2*	3.0	2.6	4.1*	2.3	2.0
	Blade	Stabilizer	19.7*	19.7*	14.1	11.8*	11.8*	7.1	8.3*	8.1	4.7	6.4*	5.8	3.5	5.2*	4.3	2.6	4.1*	3.4	2.0
-2 m	-	Blade	20.5*	18.1	14.0	12.0*	8.2	6.8	8.5*	5.3	4.5	6.6*	3.8	3.3	5.0*	2.9	2.5	4.1*	4.0	2.1
	Blade	Stabilizer	20.5*	20.5*	14.3	12.0*	12.0*	7.0	8.5*	8.1	4.6	6.6*	5.7	3.4	5.0*	4.2	2.5			
-3 m	-	Blade	20.2*	18.1	14.0	12.2*	8.3	6.9	8.4*	5.3	4.5	5.7*	3.7	3.2						
	Blade	Stabilizer	20.2*	20.2*	14.4	12.2*	12.2*	7.1	8.4*	8.0	4.6	5.7*	5.5	3.2						
-4 m	-	Blade	16.1*	16.1*	14.3	9.3*	8.2	6.8	8.4*	8.4*	4.7	5.7*	5.7*	3.4						
	Blade	Stabilizer	16.1*	16.1*	14.7	9.3*	9.3*	7.0												

LOAD CAPACITY WITH DOUBLE-ARTICULATED BOOM 4.8 M, STICK 2.65 M | AXLE WIDE

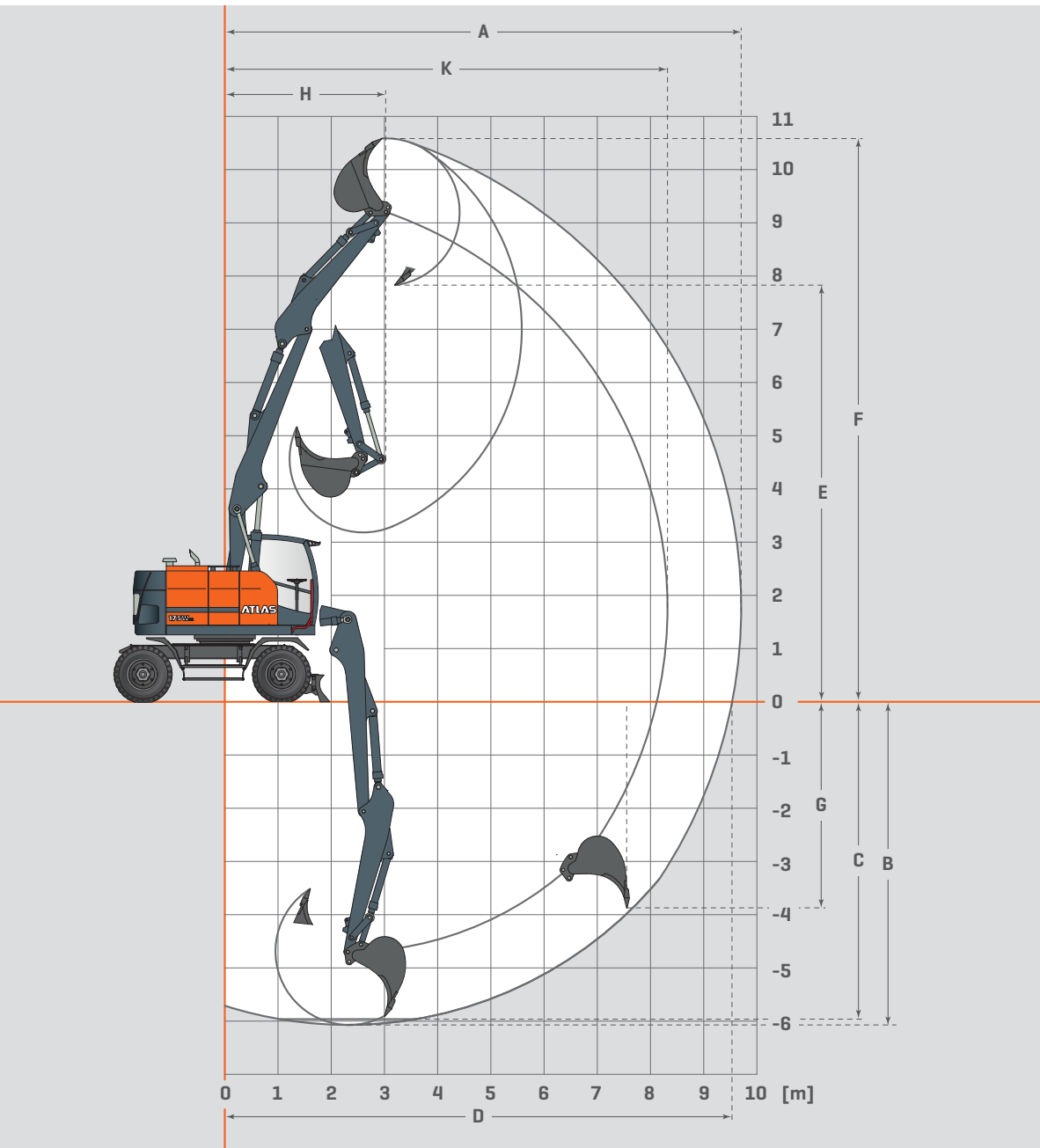
	front	rear	2 m			3 m			4 m			5 m			6 m			7 m		
			L	Q+	Q	L	Q+	Q	L	Q+	Q	L	Q+	Q	L	Q+	Q	L	Q+	Q
8 m	-	Blade							5.1*	5.1*	5.1*									
	Blade	Stabilizer							5.1*	5.1*	5.1*									
7 m	-	Blade										4.6*	4.6*	4.2						
	Blade	Stabilizer										4.6*	4.6*	4.5						
6 m	-	Blade										4.4*	4.4*	4.3	4.3*	3.6	3.2			
	Blade	Stabilizer										4.4*	4.4*	4.4*	4.3*	4.3*	3.4			
5 m	-	Blade							5.0*	5.0*	5.0*	4.7*	4.7*	4.2	4.3*	3.7	3.2	3.6*	2.8	2.4
	Blade	Stabilizer							5.0*	5.0*	5.0*	4.7*	4.7*	4.5	4.3*	4.3*	3.4	3.6*	3.6*	2.6
4 m	-	Blade				6.1*	6.1*	6.1*	5.9*	5.9*	5.8	5.0*	4.8	4.2	4.5*	3.7	3.2	4.1*	2.8	2.4
	Blade	Stabilizer				6.1*	6.1*	6.1*	5.9*	5.9*	5.9*	5.0*	5.0*	4.4	4.5*	4.5*	3.4	4.1*	3.9	2.6
3 m	-	Blade				8.5*	8.5*	8.5*	6.8*	6.5	5.6	5.5*	4.7	4.1	4.7*	3.7	3.2	4.2*	2.8	2.4
	Blade	Stabilizer				8.5*	8.5*	8.5*	6.8*	6.8*	6.0	5.5*	5.5*	4.4	4.7*	4.7*	3.4	4.2*	3.9	2.6
2 m	-	Blade	11.7*	11.7*	11.7*	10.0*	10.0*	8.6	7.7*	6.5	5.6	5.9*	4.7	4.1	4.9*	3.6	3.2	4.3*	2.7	2.4
	Blade	Stabilizer	11.7*	11.7*	11.7*	10.0*	10.0*	9.2	7.7*	7.7*	6.0	5.9*	5.9*	4.4	4.9*	4.9*	3.4	4.3*	3.9	2.6
1 m	-	Blade	18.5*	18.5*	18.3	11.6*	10.1	8.6	8.2*	6.5	5.6	6.3*	4.7	4.1	5.1*	3.5	3.1	4.3*	2.7	2.3
	Blade	Stabilizer	18.5*	18.5*	18.5*	11.6*	11.6*	9.1	8.2*	8.2*	6.0	6.3*	6.3*	4.3	5.1*	5.0	3.3	4.3*	3.8	2.5
0 m	-	Blade	20.0*	20.0*	17.4	11.7*	9.9	8.3	8.2*	6.3	5.4	6.4*	4.4	3.9	5.2*	3.4	3.0	4.4*	2.6	2.3
	Blade	Stabilizer	20.0*	20.0*	18.6	11.7*	11.7*	8.9	8.2*	8.2*	5.7	6.4*	6.4*	4.1	5.2*	4.8	3.2	4.4*	3.8	2.5
-1 m	-	Blade	19.7*	19.7*	16.7	11.8*	9.5	8.0	8.3*	6.0	5.2	6.4*	4.4	3.8	5.2*	3.3	2.9	4.1*	2.6	2.2
	Blade	Stabilizer	19.7*	19.7*	17.8	11.8*	11.8*	8.5	8.3*	8.3*	5.5	6.4*	6.3	4.1	5.2*	4.7	3.1	4.1*	3.7	2.4
-2 m	-	Blade	20.5*	20.5*	17.1	12.0*	9.4	7.9	8.5*	6.0	5.1	6.6*	4.3	3.7	5.0*	3.2	2.8	4.1*	4.0	2.4
	Blade	Stabilizer	20.5*	20.5*	18.2	12.0*	12.0*	8.4	8.5*	8.5*	5.5	6.6*	6.2	4.0	5.0*	4.6	3.0			
-3 m	-	Blade	20.2*	20.2*	17.1	12.2*	9.5	8.0	8.4*	5.9	5.1	5.7*	4.1	3.6						
	Blade	Stabilizer	20.2*	20.2*	18.2	12.2*	12.2*	8.5	8.4*	8.4*	5.4	5.7*	5.7*	3.8						
-4 m	-	Blade	16.1*	16.1*	16.1*	9.3*	9.3*	7.9	8.4*	8.4*	5.4	5.7*	5.7*	3.8						
	Blade	Stabilizer	16.1*	16.1*	16.1*	9.3*	9.3*	8.4												

Load-capacity values in tons (T) at the articulated boom end, without bucket tipping cylinder and without tool. Values apply on level ground, locked pendulum axle, and pressure switched on. Values laterally to the undercarriage apply 360° throughout the entire swing radius. Values Laterally 1) apply supported. The values longitudinally to the undercarriage apply supported across the rigid axle as well as unsupported across the steering axle. Indicated load values are stated in accordance with ISO 10567, imply a stability of 25% and are calculated at 87% of the maximum hydraulic lifting capacity. An asterisk (\*) marks values limited by the hydraulic lifting capacity.





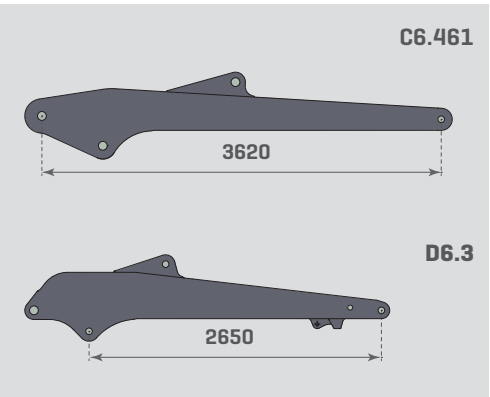
DIGGING EQUIPMENT WITH DOUBLE-ARTICULATED BOOM 5.35 M, STICK 2.65 M



DOUBLE-ARTICULATED BOOM C6.41, C6.461, STICK D6.3

Dipper stick	D6.3	D6.2
Dipper stick length	2.65	2.15
A Max. reach	9700	9200
B Max. digging depth	6050	5550
C Max. digging depth (l = 2.44 m level)	5950	5500
D Max. reach at ground level	9550	9050
E Max. dumping clearance	7850	7500
F Max. grooving height	10600	10150
G Max. vertical grooving depth	3900	3850
H Min. front swing radius	3050	2900
Max. reach stick	8300	7800
Max. cutting force	60	68
Max. breakout force	100	100

INFOBOX



LOAD CAPACITY WITH DOUBLE-ARTICULATED BOOM 5.35 M, STICK 2.65 M | AXLE STANDARD

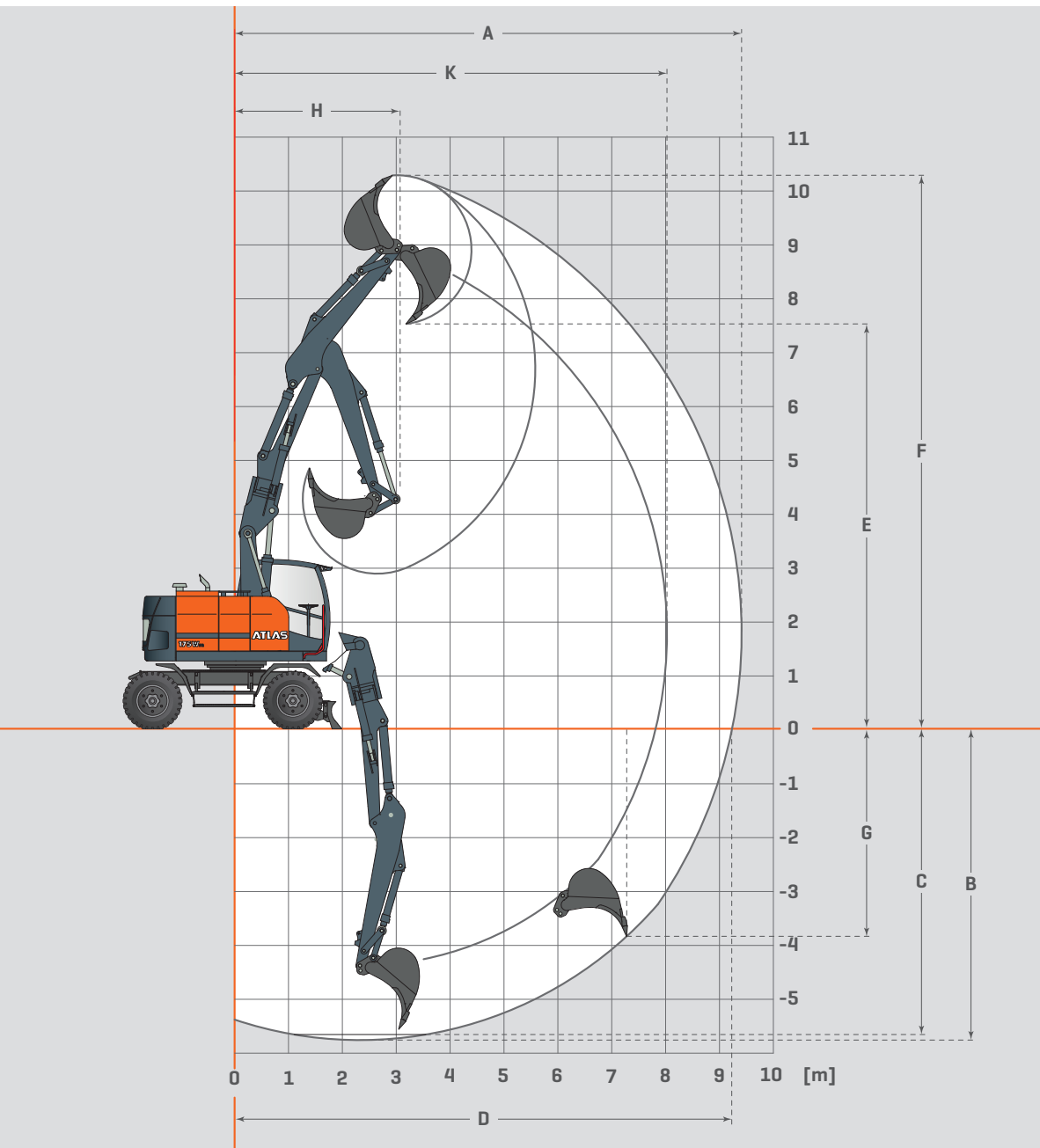
	front	rear	2 m			3 m			4 m			5 m			6 m			7 m		
			L	Q+	Q	L	Q+	Q	L	Q+	Q	L	Q+	Q	L	Q+	Q	L	Q+	Q
8 m	-	Blade							4.8*	4.8*	4.8*	4.5*	4.3	3.7						
	Blade	Stabilizer							4.8*	4.8*	4.8*	4.5*	4.5*	3.8						
	Stabilizer	Stabilizer							4.8*	4.8*	4.8*	4.5*	4.5*	3.9						
7 m	-	Blade										4.3*	4.3*	3.8	4.1*	3.3	2.8			
	Blade	Stabilizer										4.3*	4.3*	3.9	4.1*	4.1*	2.9			
	Stabilizer	Stabilizer										4.3*	4.3*	4.0	4.1*	4.1*	3.0			
6 m	-	Blade							4.8*	4.8*	4.8*	4.3*	4.3*	3.8	4.0*	3.3	2.9	3.8*	2.5	2.1
	Blade	Stabilizer							4.8*	4.8*	4.8*	4.3*	4.3*	3.9	4.0*	4.0*	3.0	3.8*	3.6	2.2
	Stabilizer	Stabilizer							4.8*	4.8*	4.8*	4.3*	4.3*	4.0	4.0*	4.0*	3.1	3.8*	3.8*	2.3
5 m	-	Blade							5.1*	5.1*	5.1*	4.5*	4.3	3.8	4.1*	3.3	2.9	3.8*	2.6	2.2
	Blade	Stabilizer							5.1*	5.1*	5.1*	4.5*	4.5*	3.9	4.1*	4.1*	3.0	3.8*	3.7	2.3
	Stabilizer	Stabilizer							5.1*	5.1*	5.1*	4.5*	4.5*	4.0	4.1*	4.1*	3.1	3.8*	3.8*	2.4
4 m	-	Blade				7.1*	7.1*	7.1*	6.2*	5.9	5.1	5.0*	4.3	3.7	4.3*	3.3	2.9	3.9*	2.6	2.2
	Blade	Stabilizer				7.1*	7.1*	7.1*	6.2*	6.2*	5.2	5.0*	5.0*	3.8	4.3*	4.3*	3.0	3.9*	3.7	2.3
	Stabilizer	Stabilizer				7.1*	7.1*	7.1*	6.2*	6.2*	5.4	5.0*	5.0*	3.9	4.3*	4.3*	3.1	3.9*	3.9*	2.4
3 m	-	Blade				7.1*	7.1*	7.1*	7.1*	5.7	4.9	5.4*	4.2	3.6	4.6*	3.3	2.9	4.0*	2.6	2.2
	Blade	Stabilizer				7.1*	7.1*	7.1*	7.1*	7.1*	5.0	5.4*	5.4*	3.7	4.6*	4.6*	2.9	4.0*	3.7	2.3
	Stabilizer	Stabilizer				7.1*	7.1*	7.1*	7.1*	7.1*	5.2	5.4*	5.4*	3.8	4.6*	4.6*	3.0	4.0*	4.0*	2.4
2 m	-	Blade				8.7*	8.7*	7.4	7.6*	5.6	4.8	5.8*	4.1	3.6	4.8*	3.3	2.8	4.1*	2.5	2.1
	Blade	Stabilizer				8.7*	8.7*	7.6	7.6*	7.6*	4.9	5.8*	5.8*	3.7	4.8*	4.7	2.9	4.1*	3.6	2.2
	Stabilizer	Stabilizer				8.7*	8.7*	7.8	7.6*	7.6*	5.1	5.8*	5.8*	3.8	4.8*	4.8*	3.0	4.1*	4.1*	2.3
1 m	-	Blade	16.5*	16.5*	14.1	10.7*	8.7	7.3	8.0*	5.6	4.8	6.1*	4.1	3.6	4.9*	3.2	2.8	4.2*	2.4	2.1
	Blade	Stabilizer	16.5*	16.5*	14.5	10.7*	10.7*	7.5	8.0*	8.0*	4.9	6.1*	6.0	3.7	4.9*	4.6	2.8	4.2*	3.5	2.1
	Stabilizer	Stabilizer	16.5*	16.5*	14.9	10.7*	10.7*	7.7	8.0*	8.0*	5.1	6.1*	6.1*	3.8	4.9*	4.9*	2.9	4.2*	4.1	2.2
0 m	-	Blade	19.7*	17.6	13.6	11.4*	8.3	6.9	8.0*	5.4	4.6	6.2*	4.0	3.4	5.0*	3.0	2.6	4.2*	2.4	2.0
	Blade	Stabilizer	19.7*	19.7*	13.9	11.4*	11.4*	7.1	8.0*	8.0*	4.7	6.2*	5.9	3.5	5.0*	4.4	2.7	4.2*	3.4	2.1
	Stabilizer	Stabilizer	19.7*	19.7*	14.4	11.4*	11.4*	7.3	8.0*	8.0*	4.9	6.2*	6.2*	3.6	5.0*	5.0*	2.8	4.2*	4.0	2.2
-1 m	-	Blade	19.7*	17.5	13.4	11.4*	8.0	6.6	8.0*	5.2	4.4	6.2*	3.8	3.3	5.0*	3.0	2.5	4.2*	2.3	2.0
	Blade	Stabilizer	19.7*	19.7*	13.8	11.4*	11.4*	6.8	8.0*	8.0	4.5	6.2*	5.7	3.4	5.0*	4.3	2.6	4.2*	3.4	2.0
	Stabilizer	Stabilizer	19.7*	19.7*	14.3	11.4*	11.4*	7.0	8.0*	8.0*	4.7	6.2*	6.2*	3.5	5.0*	5.0*	2.7	4.2*	3.9	2.1
-2 m	-	Blade	19.9*	17.8	13.7	11.7*	8.0	6.6	8.2*	5.2	4.4	6.3*	3.8	3.2	5.1*	2.8	2.4	3.9*	2.3	1.9
	Blade	Stabilizer	19.9*	19.9*	14.0	11.7*	11.7*	6.8	8.2*	7.9	4.5	6.3*	5.6	3.3	5.1*	4.2	2.5	3.9*	3.3	2.0
	Stabilizer	Stabilizer	19.9*	19.9*	14.5	11.7*	11.7*	7.0	8.2*	8.2*	4.6	6.3*	6.3*	3.4	5.1*	4.9	2.6	3.9*	3.9*	2.1
-3 m	-	Blade	19.8*	17.5	13.4	11.9*	8.0	6.6	8.4*	5.2	4.4	6.3*	3.7	3.1	4.5*	2.8	2.4			
	Blade	Stabilizer	19.8*	19.8*	13.8	11.9*	11.9*	6.8	8.4*	8.0	4.5	6.3*	5.5	3.2	4.5*	4.2	2.5			
	Stabilizer	Stabilizer	19.8*	19.8*	14.2	11.9*	11.9*	7.0	8.4*	8.4*	4.7	6.3*	6.3*	3.3	4.5*	4.5*	2.6			

LOAD CAPACITY WITH DOUBLE-ARTICULATED BOOM 5.35 M, STICK 2.65 M | AXLE WIDE

			2 m			3 m			4 m			5 m			6 m			7 m		
	front	rear	L	Q+	Q	L	Q+	Q	L	Q+	Q	L	Q+	Q	L	Q+	Q	L	Q+	Q
8 m	-	Blade							4.8 *	4.8 *	4.8 *	4.5 *	4.5 *	4.2						
	Blade	Stabilizer							4.8 *	4.8 *	4.8 *	4.5 *	4.5 *	4.4						
	Stabilizer	Stabilizer							4.8 *	4.8 *	4.8 *	4.5 *	4.5 *	4.4						
7 m	-	Blade										4.3 *	4.3 *	4.3 *	4.1 *	3.6	3.2			
	Blade	Stabilizer										4.3 *	4.3 *	4.3 *	4.1 *	4.1 *	3.4			
	Stabilizer	Stabilizer										4.3 *	4.3 *	4.3 *	4.1 *	4.1 *	3.3			
6 m	-	Blade							4.8 *	4.8 *	4.8 *	4.3 *	4.3 *	4.2	4.0 *	3.7	3.3	3.8 *	2.8	2.4
	Blade	Stabilizer							4.8 *	4.8 *	4.8 *	4.3 *	4.3 *	4.3 *	4.0 *	4.0 *	3.5	3.8 *	3.8 *	2.6
	Stabilizer	Stabilizer							4.8 *	4.8 *	4.8 *	4.3 *	4.3 *	4.3 *	4.0 *	4.0 *	3.4	3.8 *	3.8 *	2.6
5 m	-	Blade							5.1 *	5.1 *	5.1 *	4.5 *	4.5 *	4.2	4.1 *	3.7	3.3	3.8 *	2.8	2.5
	Blade	Stabilizer							5.1 *	5.1 *	5.1 *	4.5 *	4.5 *	4.5	4.1 *	4.1 *	3.5	3.8 *	3.8 *	2.7
	Stabilizer	Stabilizer							5.1 *	5.1 *	5.1 *	4.5 *	4.5 *	4.4	4.1 *	4.1 *	3.4	3.8 *	3.8 *	2.6
4 m	-	Blade				7.1 *	7.1 *	7.1 *	6.2 *	6.2 *	5.8	5.0 *	4.7	4.2	4.3 *	3.7	3.2	3.9 *	2.9	2.5
	Blade	Stabilizer				7.1 *	7.1 *	7.1 *	6.2 *	6.2 *	6.1	5.0 *	5.0 *	4.4	4.3 *	4.3 *	3.4	3.9 *	3.9 *	2.7
	Stabilizer	Stabilizer				7.1 *	7.1 *	7.1 *	6.2 *	6.2 *	6.1	5.0 *	5.0 *	4.4	4.3 *	4.3 *	3.4	3.9 *	3.9 *	2.7
3 m	-	Blade				7.1 *	7.1 *	7.1 *	7.1 *	6.4	5.6	5.4 *	4.6	4.1	4.6 *	3.6	3.2	4.0 *	2.9	2.5
	Blade	Stabilizer				7.1 *	7.1 *	7.1 *	7.1 *	7.1 *	5.9	5.4 *	5.4 *	4.3	4.6 *	4.6 *	3.4	4.0 *	4.0 *	2.7
	Stabilizer	Stabilizer				7.1 *	7.1 *	7.1 *	7.1 *	7.1 *	5.9	5.4 *	5.4 *	4.3	4.6 *	4.6 *	3.4	4.0 *	4.0 *	2.6
2 m	-	Blade				8.7 *	8.7 *	8.5	7.6 *	6.3	5.4	5.8 *	4.6	4.0	4.8 *	3.6	3.2	4.1 *	2.8	2.4
	Blade	Stabilizer				8.7 *	8.7 *	8.7 *	7.6 *	7.6 *	5.8	5.8 *	5.8 *	4.3	4.8 *	4.8 *	3.4	4.1 *	3.9	2.6
	Stabilizer	Stabilizer				8.7 *	8.7 *	8.7 *	7.6 *	7.6 *	5.7	5.8 *	5.8 *	4.2	4.8 *	4.8 *	3.3	4.1 *	4.1 *	2.6
1 m	-	Blade	16.5 *	16.5 *	16.5 *	10.7 *	9.9	8.4	8.0 *	6.3	5.4	6.1 *	4.6	4.0	4.9 *	3.5	3.1	4.2 *	2.7	2.3
	Blade	Stabilizer	16.5 *	16.5 *	16.5 *	10.7 *	10.7 *	8.9	8.0 *	8.0 *	5.8	6.1 *	6.1 *	4.3	4.9 *	4.9 *	3.3	4.2 *	3.8	2.5
	Stabilizer	Stabilizer	16.5 *	16.5 *	16.5 *	10.7 *	10.7 *	8.8	8.0 *	8.0 *	5.7	6.1 *	6.1 *	4.2	4.9 *	4.9 *	3.3	4.2 *	4.1	2.5
0 m	-	Blade	19.7 *	19.7 *	16.6	11.4 *	9.5	8.0	8.0 *	6.1	5.2	6.2 *	4.5	3.9	5.0 *	3.4	2.9	4.2 *	2.6	2.3
	Blade	Stabilizer	19.7 *	19.7 *	17.8	11.4 *	11.4 *	8.5	8.0 *	8.0 *	5.6	6.2 *	6.2 *	4.1	5.0 *	4.8	3.1	4.2 *	3.8	2.5
	Stabilizer	Stabilizer	19.7 *	19.7 *	17.6	11.4 *	11.4 *	8.4	8.0 *	8.0 *	5.5	6.2 *	6.2 *	4.1	5.0 *	5.0 *	3.1	4.2 *	4.0	2.4
-1 m	-	Blade	19.7 *	19.7 *	16.5	11.4 *	9.2	7.7	8.0 *	5.9	5.0	6.2 *	4.3	3.7	5.0 *	3.3	2.9	4.2 *	2.6	2.2
	Blade	Stabilizer	19.7 *	19.7 *	17.6	11.4 *	11.4 *	8.2	8.0 *	8.0 *	5.4	6.2 *	6.2 *	4.0	5.0 *	4.7	3.1	4.2 *	3.7	2.4
	Stabilizer	Stabilizer	19.7 *	19.7 *	17.4	11.4 *	11.4 *	8.2	8.0 *	8.0 *	5.3	6.2 *	6.2 *	3.9	5.0 *	5.0 *	3.0	4.2 *	3.9	2.4
-2 m	-	Blade	19.9 *	19.9 *	16.8	11.7 *	9.2	7.7	8.2 *	5.8	5.0	6.3 *	4.2	3.7	5.1 *	3.2	2.8	3.9 *	2.5	2.2
	Blade	Stabilizer	19.9 *	19.9 *	17.9	11.7 *	11.7 *	8.2	8.2 *	8.2 *	5.3	6.3 *	6.2	3.9	5.1 *	4.6	3.0	3.9 *	3.7	2.4
	Stabilizer	Stabilizer	19.9 *	19.9 *	17.7	11.7 *	11.7 *	8.1	8.2 *	8.2 *	5.3	6.3 *	6.3 *	3.9	5.1 *	4.9	2.9	3.9 *	3.9 *	2.3
-3 m	-	Blade	19.8 *	19.8 *	16.5	11.9 *	9.2	7.7	8.4 *	5.8	5.0	6.3 *	4.1	3.6	4.5 *	3.1	2.7			
	Blade	Stabilizer	19.8 *	19.8 *	17.6	11.9 *	11.9 *	8.2	8.4 *	8.4 *	5.4	6.3 *	6.1	3.8	4.5 *	4.5 *	2.9			
	Stabilizer	Stabilizer	19.8 *	19.8 *	17.4	11.9 *	11.9 *	8.1	8.4 *	8.4 *	5.3	6.3 *	6.3 *	3.8	4.5 *	4.5 *	2.9			
-4 m	-	Blade	19.3 *	19.3 *	17.2	11.2 *	9.3	7.8	7.4 *	5.7	4.9	4.6 *	4.1	3.5						
	Blade	Stabilizer	19.3 *	19.3 *	18.4	11.2 *	11.2 *	8.3	7.4 *	7.4 *	5.2	4.6 *	4.6 *	3.8						
	Stabilizer	Stabilizer	19.3 *	19.3 *	18.2	11.2 *	11.2 *	8.3	7.4 *	7.4 *	5.2	4.6 *	4.6 *	3.7						



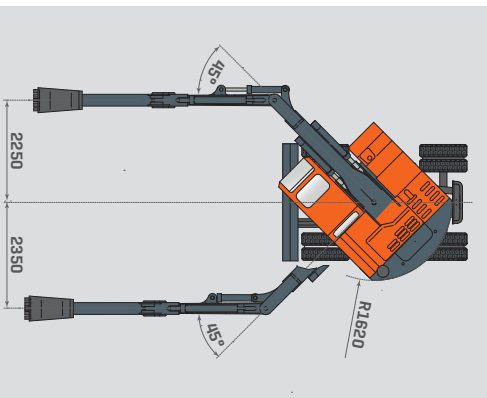
DIGGING EQUIPMENT WITH DOUBLE-ARTICULATED BOOM 5.0 M, STICK 2.65 M



DOUBLE-ARTICULATED BOOM C6.41, C6.47, STICK D6.3

Dipper stick	D6.3	D6.2
Dipper stick length	2.65	2.15
A Max. reach	9450	8950
B Max. digging depth	5800	5300
C Max. digging depth (l = 2.44 m level)	5700	5150
D Max. reach at ground level	9250	8750
E Max. dumping clearance	7550	7150
F Max. grooving height	10300	9900
G Max. vertical grooving depth	3850	3350
H Min. front swing radius	3100	2900
Max. reach stick	8000	7500
Max. cutting force	60	68
Max. breakout force	100	100

INFOBOX



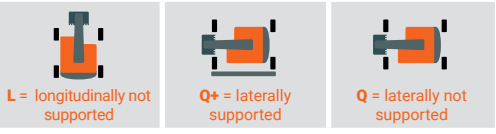
LOAD CAPACITY WITH DOUBLE-ARTICULATED BOOM 5.0 M, STICK 2.65 M | AXLE STANDARD

	front	rear	2 m			3 m			4 m			5 m			6 m			7 m		
			L	Q+	Q	L	Q+	Q	L	Q+	Q	L	Q+	Q	L	Q+	Q	L	Q+	Q
8 m	-	Blade							5.1*	5.1*	5.1*									
	Stabilizer	Stabilizer							5.1*	5.1*	5.1*									
7 m	-	Blade										4.4*	4.4*	3.8						
	Stabilizer	Stabilizer										4.4*	4.4*	3.9						
6 m	-	Blade										4.3*	4.3*	3.8	4.1*	3.3	2.9			
	Stabilizer	Stabilizer										4.3*	4.3*	3.9	4.1*	4.1*	3.0			
5 m	-	Blade							5.0*	5.0*	5.0*	4.5*	4.4	3.8	4.1*	3.4	2.9	3.9*	2.5	2.1
	Stabilizer	Stabilizer							5.0*	5.0*	5.0*	4.5*	4.5*	3.9	4.1*	4.1*	3.0	3.9*	3.6	2.2
4 m	-	Blade				7.1*	7.1*	7.1*	5.9*	5.9	5.1	4.9*	4.3	3.7	4.3*	3.4	2.9	3.9*	2.5	2.2
	Stabilizer	Stabilizer				7.1*	7.1*	7.1*	5.9*	5.9*	5.2	4.9*	4.9*	3.8	4.3*	4.3*	3.0	3.9*	3.6	2.2
3 m	-	Blade				7.6*	7.6*	7.6*	6.8*	6.8	5.0	5.4*	4.2	3.7	4.6*	3.3	2.9	4.0*	2.5	2.1
	Stabilizer	Stabilizer				7.6*	7.6*	7.6*	6.8*	6.8*	5.1	5.4*	5.4*	3.8	4.6*	4.6*	3.0	4.0*	3.6	2.2
2 m	-	Blade				9.0*	8.9	7.4	7.7*	5.7	4.9	5.8*	4.2	3.6	4.8*	3.3	2.8	4.2*	2.5	2.1
	Stabilizer	Stabilizer				9.0*	9.0*	7.6	7.7*	7.7*	5.0	5.8*	5.8*	3.7	4.8*	4.7	2.9	4.2*	3.5	2.2
1 m	-	Blade	17.2*	17.2*	14.5	11.0*	8.9	7.4	7.9*	5.7	4.8	6.1*	4.1	3.6	4.9*	3.2	2.8	4.2*	2.4	2.0
	Stabilizer	Stabilizer	17.2*	17.2*	14.9	11.0*	11.0*	7.6	7.9*	7.9*	5.0	6.1*	6.0	3.7	4.9*	4.6	2.8	4.2*	3.5	2.1
0 m	-	Blade	19.5*	17.8	13.8	11.4*	8.4	7.0	8.0*	5.5	4.7	6.2*	4.0	3.5	5.0*	3.0	2.6	4.2*	2.3	2.0
	Stabilizer	Stabilizer	19.5*	19.5*	14.2	11.4*	11.4*	7.2	8.0*	8.0*	4.8	6.2*	5.9	3.6	5.0*	4.4	2.7	4.2*	3.4	2.1
-1 m	-	Blade	19.7*	17.8	13.7	11.5*	8.1	6.7	8.1*	5.2	4.4	6.2*	3.8	3.3	5.0*	2.9	2.5	4.2*	2.3	1.9
	Stabilizer	Stabilizer	19.7*	19.7*	14.1	11.5*	11.5*	6.9	8.1*	8.0	4.6	6.2*	5.7	3.4	5.0*	4.3	2.6	4.2*	3.3	2.0
-2 m	-	Blade	20.0*	17.5	13.4	11.7*	8.0	6.6	8.2*	5.2	4.4	6.3*	3.8	3.2	5.0*	2.8	2.4	3.1*	2.2	1.9
	Stabilizer	Stabilizer	20.0*	20.0*	13.8	11.7*	11.7*	6.8	8.2*	8.0	4.5	6.3*	5.6	3.3	5.0*	4.2	2.5	3.1*	3.1*	2.0
-3 m	-	Blade	20.0*	17.7	13.6	11.9*	8.0	6.6	8.4*	5.2	4.4	6.1*	3.6	3.1	3.8*	2.8	2.4			
	Stabilizer	Stabilizer	20.0*	20.0*	14.0	11.9*	11.9*	6.8	8.4*	8.0	4.5	6.1*	5.5	3.2	3.8*	3.8*	2.5			
			20.0*	20.0*	14.4	11.9*	11.9*	7.0	8.4*	8.4*	4.7	6.1*	6.1*	3.3	3.8*	3.8*	2.5			

LOAD CAPACITY WITH DOUBLE-ARTICULATED BOOM 5.0 M, STICK 2.65 M | AXLE WIDE

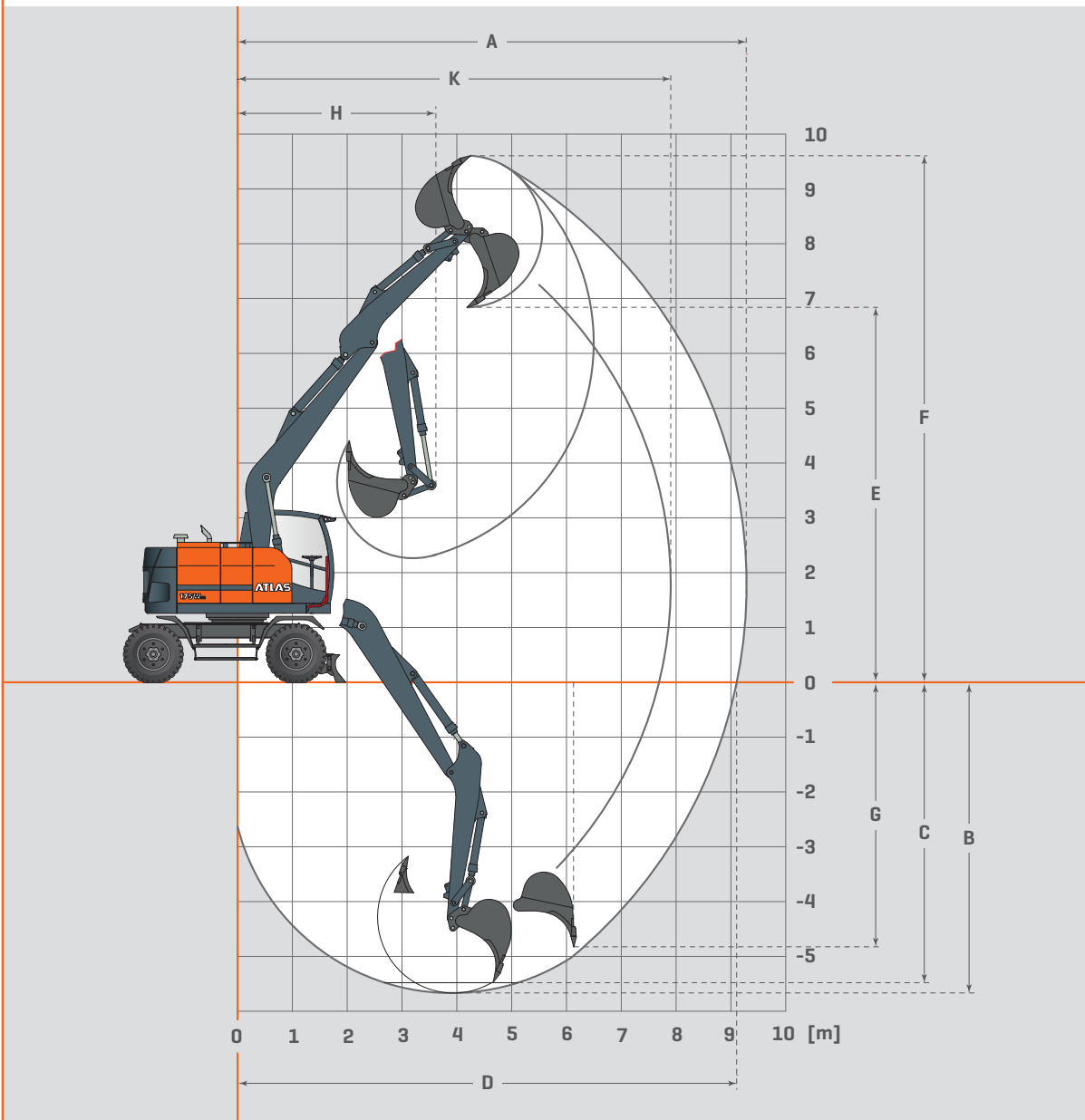
	front	rear	2 m			3 m			4 m			5 m			6 m			7 m		
			L	Q+	Q	L	Q+	Q	L	Q+	Q	L	Q+	Q	L	Q+	Q	L	Q+	Q
8 m	-	Blade							5.1*	5.1*	5.1*									
	Stabilizer	Stabilizer							5.1*	5.1*	5.1*									
7 m	-	Blade										4.4*	4.4*	4.3						
	Stabilizer	Stabilizer										4.4*	4.4*	4.4*						
6 m	-	Blade										4.3*	4.3*	4.3	4.1*	3.7	3.2			
	Stabilizer	Stabilizer										4.3*	4.3*	4.3*	4.1*	4.1*	3.4			
5 m	-	Blade							5.0*	5.0*	5.0*	4.5*	4.5*	4.2	4.1*	3.7	3.3	3.9*	2.7	2.4
	Stabilizer	Stabilizer							5.0*	5.0*	5.0*	4.5*	4.5*	4.5	4.1*	4.1*	3.5	3.9*	3.9*	2.6
4 m	-	Blade				7.1*	7.1*	7.1*	5.9*	5.9*	5.7	4.9*	4.7	4.1	4.3*	3.7	3.3	3.9*	2.8	2.4
	Stabilizer	Stabilizer				7.1*	7.1*	7.1*	5.9*	5.9*	5.9*	4.9*	4.9*	4.4	4.3*	4.3*	3.5	3.9*	3.9*	2.6
3 m	-	Blade				7.6*	7.6*	7.6*	6.8*	6.5	5.6	5.4*	4.7	4.1	4.6*	3.7	3.2	4.0*	2.8	2.4
	Stabilizer	Stabilizer				7.6*	7.6*	7.6*	6.8*	6.8*	6.0	5.4*	5.4*	4.4	4.6*	4.6*	3.4	4.0*	3.9	2.6
2 m	-	Blade				9.0*	9.0*	8.6	7.7*	6.4	5.5	5.8*	4.7	4.1	4.8*	3.6	3.2	4.2*	2.7	2.4
	Stabilizer	Stabilizer				9.0*	9.0*	9.0*	7.7*	7.7*	5.8	5.8*	5.8*	4.3	4.8*	4.8*	3.4	4.2*	3.9	2.5
1 m	-	Blade	17.2*	17.2*	17.2*	11.0*	10.1	8.5	7.9*	6.3	5.5	6.1*	4.6	4.0	4.9*	3.5	3.1	4.2*	2.7	2.3
	Stabilizer	Stabilizer	17.2*	17.2*	17.2*	11.0*	11.0*	9.1	7.9*	7.9*	5.8	6.1*	6.1*	4.3	4.9*	4.9*	3.3	4.2*	3.8	2.5
0 m	-	Blade	19.5*	19.5*	16.9	11.4*	9.6	8.1	8.0*	6.2	5.3	6.2*	4.5	3.9	5.0*	3.4	3.0	4.2*	2.6	2.3
	Stabilizer	Stabilizer	19.5*	19.5*	18.0	11.4*	11.4*	8.6	8.0*	8.0*	5.7	6.2*	6.2*	4.2	5.0*	4.8	3.2	4.2*	3.7	2.4
-1 m	-	Blade	19.7*	19.7*	16.8	11.5*	9.3	7.8	8.1*	5.9	5.1	6.2*	4.3	3.7	5.0*	3.3	2.8	4.2*	2.5	2.2
	Stabilizer	Stabilizer	19.7*	19.7*	17.9	11.5*	11.5*	8.3	8.1*	8.1*	5.4	6.2*	6.2*	4.0	5.0*	4.7	3.0	4.2*	3.7	2.4
-2 m	-	Blade	20.0*	20.0*	16.5	11.7*	9.2	7.7	8.2*	5.9	5.0	6.3*	4.2	3.7	5.0*	3.2	2.7	3.1*	2.5	2.2
	Stabilizer	Stabilizer	20.0*	20.0*	17.6	11.7*	11.7*	8.2	8.2*	8.2*	5.4	6.3*	6.2	3.9	5.0*	4.6	2.9	3.1*	3.1*	2.4
-3 m	-	Blade	20.0*	20.0*	16.7	11.9*	9.2	7.7	8.4*	5.9	5.0	6.1*	4.1	3.5	3.8*	3.1	2.7			
	Stabilizer	Stabilizer	20.0*	20.0*	17.8	11.9*	11.9*	8.2	8.4*	8.4*	5.4	6.1*	6.0	3.8	3.8*	3.8*	2.9			
-4 m	-	Blade	17.6*	17.6*	17.6*	10.0*	9.3	7.7	6.3*	5.7	4.9	6.1*	6.1*	3.7	3.8*	3.8*	2.9			
	Stabilizer	Stabilizer	17.6*	17.6*	17.6*	10.0*	10.0*	8.3	6.3*	6.3*	5.2									
			17.6*	17.6*	17.6*	10.0*	10.0*	8.2	6.3*	6.3*	5.2									

Load-capacity values in tons (T) at the articulated boom end, without bucket tipping cylinder and without tool. Values apply on level ground, locked pendulum axle, and pressure switched on. Values laterally to the undercarriage apply 360° throughout the entire swing radius. Values Laterally 1) apply supported. The values longitudinally to the undercarriage apply supported across the rigid axle as well as unsupported across the steering axle. Indicated load values are stated in accordance with ISO 10567, imply a stability of 25% and are calculated at 87% of the maximum hydraulic lifting capacity. An asterisk (\*) marks values limited by the hydraulic lifting capacity.





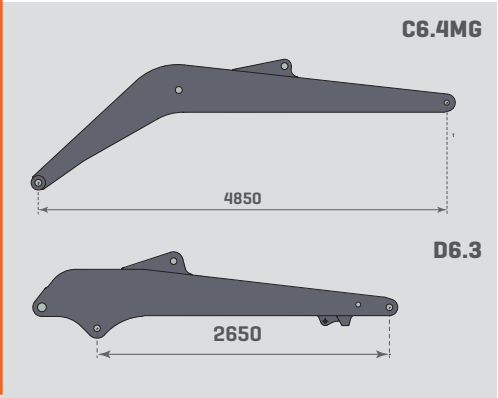
DIGGING EQUIPMENT WITH MONOBOOM 4.80 M, STICK 2.65 M



MONOBOOM C6.4MG, STICK 2,65 M

	D6.3	D6.31
Dipper stick	2.65	3.15
Dipper stick length	2.65	3.15
A Max. reach	9300	9800
B Max. digging depth	5700	6200
C Max. digging depth (l = 2.44 m level)	5500	6000
D Max. reach at ground level	9100	9600
E Max. dumping clearance	6800	7100
F Max. grooving height	9600	9900
G Max. vertical grooving depth	4800	4900
H Min. front swing radius	3600	3700
Max. reach stick	7900	8400
Max. cutting force	60	55
Max. breakout force	100	100

INFOBOX



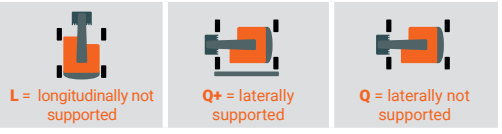
LOAD CAPACITY WITH MONOBOOM 4.80 M, STICK 2.65 M | AXLE STANDARD

			3 m			4 m			5 m			6 m			7 m		
			L	Q+	Q	L	Q+	Q	L	Q+	Q	L	Q+	Q	L	Q+	Q
7 m	-	Blade							3.9 *	3.9 *	3.7						
	Blade	Stabilizer							3.9 *	3.9 *	3.8						
	Stabilizer	Stabilizer							3.9 *	3.9 *	3.9						
6 m	-	Blade										3.7 *	3.2	2.8			
	Blade	Stabilizer										3.7 *	3.7 *	2.9			
	Stabilizer	Stabilizer										3.7 *	3.7 *	3.0			
5 m	-	Blade							4.0 *	4.0 *	3.7	3.7 *	3.2	2.8	3.6 *	2.5	2.2
	Blade	Stabilizer							4.0 *	4.0 *	3.8	3.7 *	3.7 *	2.9	3.6 *	3.6	2.2
	Stabilizer	Stabilizer							4.0 *	4.0 *	3.9	3.7 *	3.7 *	2.9	3.6 *	3.6 *	2.3
4 m	-	Blade				5.2 *	5.2 *	5.0	4.4 *	4.2	3.6	3.9 *	3.1	2.7	3.6 *	2.5	2.1
	Blade	Stabilizer				5.2 *	5.2 *	5.2	4.4 *	4.4 *	3.7	3.9 *	3.9 *	2.8	3.6 *	3.6	2.2
	Stabilizer	Stabilizer				5.2 *	5.2 *	5.2 *	4.4 *	4.4 *	3.8	3.9 *	3.9 *	2.9	3.6 *	3.6 *	2.3
3 m	-	Blade				6.1 *	5.5	4.7	4.9 *	4.0	3.4	4.2 *	3.1	2.6	3.7 *	2.4	2.1
	Blade	Stabilizer				6.1 *	6.1 *	4.8	4.9 *	4.9 *	3.5	4.2 *	4.2 *	2.7	3.7 *	3.5	2.2
	Stabilizer	Stabilizer				6.1 *	6.1 *	5.0	4.9 *	4.9 *	3.6	4.2 *	4.2 *	2.8	3.7 *	3.7 *	2.2
2 m	-	Blade				6.9 *	5.2	4.4	5.3 *	3.8	3.3	4.4 *	3.0	2.5	3.8 *	2.4	2.1
	Blade	Stabilizer				6.9 *	6.9 *	4.5	5.3 *	5.3 *	3.4	4.4 *	4.3	2.6	3.8 *	3.5	2.1
	Stabilizer	Stabilizer				6.9 *	6.9 *	4.7	5.3 *	5.3 *	3.5	4.4 *	4.4 *	2.7	3.8 *	3.8 *	2.2
1 m	-	Blade				7.3 *	5.0	4.2	5.6 *	3.7	3.1	4.6 *	2.9	2.5	3.9 *	2.3	2.0
	Blade	Stabilizer				7.3 *	7.3 *	4.3	5.6 *	5.5	3.2	4.6 *	4.2	2.5	3.9 *	3.4	2.1
	Stabilizer	Stabilizer				7.3 *	7.3 *	4.5	5.6 *	5.6 *	3.3	4.6 *	4.6 *	2.6	3.9 *	3.9 *	2.1
0 m	-	Blade				7.3 *	4.9	4.1	5.7 *	3.6	3.1	4.6 *	2.8	2.4	3.8 *	2.3	2.0
	Blade	Stabilizer				7.3 *	7.3 *	4.2	5.7 *	5.4	3.2	4.6 *	4.2	2.5	3.8 *	3.4	2.0
	Stabilizer	Stabilizer				7.3 *	7.3 *	4.4	5.7 *	5.7 *	3.3	4.6 *	4.6 *	2.6	3.8 *	3.8 *	2.1
-1 m	-	Blade	7.1 *	7.1 *	6.3	7.0 *	4.8	4.1	5.5 *	3.6	3.0	4.4 *	2.8	2.4	3.6 *	2.3	2.0
	Blade	Stabilizer	7.1 *	7.1 *	6.4	7.0 *	7.0 *	4.2	5.5 *	5.3	3.1	4.4 *	4.1	2.5	3.6 *	3.4	2.0
	Stabilizer	Stabilizer	7.1 *	7.1 *	6.7	7.0 *	7.0 *	4.3	5.5 *	5.5 *	3.2	4.4 *	4.4 *	2.5	3.6 *	3.6 *	2.1
-2 m	-	Blade	7.9 *	7.7	6.3	6.3 *	4.9	4.1	5.0 *	3.6	3.0	4.0 *	2.8	2.4			
	Blade	Stabilizer	7.9 *	7.9 *	6.5	6.3 *	6.3 *	4.2	5.0 *	5.0 *	3.1	4.0 *	4.0 *	2.5			
	Stabilizer	Stabilizer	7.9 *	7.9 *	6.7	6.3 *	6.3 *	4.4	5.0 *	5.0 *	3.2	4.0 *	4.0 *	2.6			
-3 m	-	Blade	6.4 *	6.4 *	6.4 *	5.2 *	4.9	4.2	4.1 *	3.6	3.1	3.0 *	2.9	2.5			
	Blade	Stabilizer	6.4 *	6.4 *	6.4 *	5.2 *	5.2 *	4.3	4.1 *	4.1 *	3.2	3.0 *	3.0 *	2.5			
	Stabilizer	Stabilizer	6.4 *	6.4 *	6.4 *	5.2 *	5.2 *	4.4	4.1 *	4.1 *	3.3	3.0 *	3.0 *	2.6			

LOAD CAPACITY WITH MONOBOOM 4.80 M, STICK 2.65 M | AXLE WIDE

			3 m			4 m			5 m			6 m			7 m		
			L	Q+	Q	L	Q+	Q	L	Q+	Q	L	Q+	Q	L	Q+	Q
7 m	-	Blade							3.9 *	3.9 *	3.9 *						
	Blade	Stabilizer							3.9 *	3.9 *	3.9 *						
	Stabilizer	Stabilizer							3.9 *	3.9 *	3.9 *						
6 m	-	Blade										3.7 *	3.6	3.1			
	Blade	Stabilizer										3.7 *	3.7 *	3.3			
	Stabilizer	Stabilizer										3.7 *	3.7 *	3.3			
5 m	-	Blade							4.0 *	4.0 *	4.0 *	3.7 *	3.5	3.1	3.6 *	2.8	2.4
	Blade	Stabilizer							4.0 *	4.0 *	3.7 *	3.7 *	3.3	3.6 *	3.6 *	2.6	
	Stabilizer	Stabilizer							4.0 *	4.0 *	4.0 *	3.7 *	3.7 *	3.3	3.6 *	3.6 *	2.6
4 m	-	Blade				5.2 *	5.2 *	5.2 *	4.4 *	4.4 *	4.0	3.9 *	3.5	3.0	3.6 *	2.7	2.4
	Blade	Stabilizer				5.2 *	5.2 *	5.2 *	4.4 *	4.4 *	4.3	3.9 *	3.9 *	3.2	3.6 *	3.6 *	2.6
	Stabilizer	Stabilizer				5.2 *	5.2 *	5.2 *	4.4 *	4.4 *	4.2	3.9 *	3.9 *	3.2	3.6 *	3.6 *	2.5
3 m	-	Blade				6.1 *	6.1 *	5.3	4.9 *	4.4	3.8	4.2 *	3.4	3.0	3.7 *	2.7	2.4
	Blade	Stabilizer				6.1 *	6.1 *	5.7	4.9 *	4.9 *	4.1	4.2 *	4.2 *	3.2	3.7 *	3.7 *	2.5
	Stabilizer	Stabilizer				6.1 *	6.1 *	5.6	4.9 *	4.9 *	4.1	4.2 *	4.2 *	3.1	3.7 *	3.7 *	2.5
2 m	-	Blade				6.9 *	5.8	5.0	5.3 *	4.2	3.7	4.4 *	3.3	2.9	3.8 *	2.6	2.3
	Blade	Stabilizer				6.9 *	6.9 *	5.4	5.3 *	5.3 *	3.9	4.4 *	4.4 *	3.1	3.8 *	3.8	2.5
	Stabilizer	Stabilizer				6.9 *	6.9 *	5.3	5.3 *	5.3 *	3.9	4.4 *	4.4 *	3.0	3.8 *	3.8 *	2.4
1 m	-	Blade				7.3 *	5.6	4.8	5.6 *	4.1	3.6	4.6 *	3.2	2.8	3.9 *	2.6	2.3
	Blade	Stabilizer				7.3 *	7.3 *	5.1	5.6 *	5.6 *	3.8	4.6 *	4.6 *	3.0	3.9 *	3.7	2.4
	Stabilizer	Stabilizer				7.3 *	7.3 *	5.1	5.6 *	5.6 *	3.8	4.6 *	4.6 *	2.9	3.9 *	3.9 *	2.4
0 m	-	Blade				7.3 *	5.5	4.7	5.7 *	4.0	3.5	4.6 *	3.2	2.7	3.8 *	2.6	2.2
	Blade	Stabilizer				7.3 *	7.3 *	5.0	5.7 *	5.7 *	3.7	4.6 *	4.6 *	2.9	3.8 *	3.7	2.4
	Stabilizer	Stabilizer				7.3 *	7.3 *	5.0	5.7 *	5.7 *	3.7	4.6 *	4.6 *	2.9	3.8 *	3.8 *	2.4
-1 m	-	Blade	7.1 *	7.1 *	7.1 *	7.0 *	5.5	4.7	5.5 *	4.0	3.4	4.4 *	3.1	2.7	3.6 *	2.6	2.2
	Blade	Stabilizer	7.1 *	7.1 *	7.1 *	7.0 *	7.0 *	5.0	5.5 *	5.5 *	3.7	4.4 *	4.4 *	2.9	3.6 *	3.6 *	2.4
	Stabilizer	Stabilizer	7.1 *	7.1 *	7.1 *	7.0 *	7.0 *	5.0	5.5 *	5.5 *	3.6	4.4 *	4.4 *	2.9	3.6 *	3.6 *	2.4
-2 m	-	Blade	7.9 *	7.9 *	7.3	6.3 *	5.5	4.7	5.0 *	4.0	3.4	4.0 *	3.1	2.7			
	Blade	Stabilizer	7.9 *	7.9 *	7.9	6.3 *	6.3 *	5.0	5.0 *	5.0 *	3.7	4.0 *	4.0 *	2.9			
	Stabilizer	Stabilizer	7.9 *	7.9 *	7.8	6.3 *	6.3 *	5.0	5.0 *	5.0 *	3.7	4.0 *	4.0 *	2.9			
-3 m	-	Blade	6.4 *	6.4 *	6.4 *	5.2 *	5.2 *	4.8	4.1 *	4.1	3.5	3.0 *	3.0 *	2.8			
	Blade	Stabilizer	6.4 *	6.4 *	6.4 *	5.2 *	5.2 *	5.1	4.1 *	4.1 *	3.8	3.0 *	3.0 *	3.0			
	Stabilizer	Stabilizer	6.4 *	6.4 *	6.4 *	5.2 *	5.2 *	5.0	4.1 *	4.1 *	3.7	3.0 *	3.0 *	3.0			

Load-capacity values in tons (T) at the articulated boom end, without bucket tipping cylinder and without tool. Values apply on level ground, locked pendulum axle, and pressure switched on. Values laterally to the undercarriage apply 360° throughout the entire swing radius. Values Laterally 1) apply supported. The values longitudinally to the undercarriage apply supported across the rigid axle as well as unsupported across the steering axle. Indicated load values are stated in accordance with ISO 10567, imply a stability of 25% and are calculated at 87% of the maximum hydraulic lifting capacity. An asterisk (\*) marks values limited by the hydraulic lifting capacity.







1919

#### **FOUNDATION**

Hinrich Weyhausen founds the company and initially produces agricultural equipment at the Delmenhorst location.

1945

#### **THE FIRST PATENT**

The first patent for an ATLAS attachment crane is granted.

1950

#### **FIRST FULLY HYDRAULIC EXCAVATOR**

With the first fully hydraulically operated ATLAS excavator, the success story for an entire industry begins.

1956

#### **ATLAS VECHTA**

Start-up of the ATLAS factory at Vechta.

1960

#### **ATLAS GANDERKESEE**

Start-up of the ATLAS factory at Ganderkesee.

1965

#### **RAIL-ROAD EXCAVATOR**

The world's first ATLAS rail-road excavator lays the foundation for a leading position in this market.

1980

#### **ATLAS UK**

Start-up of the Bradford, England location for production of ATLAS Cranes. Bradford, England.



1986

#### **ATLAS WHEELED EXCAVATOR 1304**

Market launch of the best-selling ATLAS excavator model yet.

2001

#### **CHANGE OF MANAGEMENT**

ATLAS is taken over by the American Terex Corporation.

2010

#### **ATLAS MASCHINEN GMBH**

The entrepreneur Fil Filipov acquires ATLAS and re-establishes the company as an independent business under the name of "ATLAS Maschinen GmbH".

2012

#### **ATLAS SPARE PARTS GMBH**

Foundation of ATLAS Spare Parts GmbH – in order to improve the efficiency of spare parts supply.

2014

#### **NEW MANAGING DIRECTOR**

ATLAS expands its product portfolio by tunnel excavators. At the same time, Brahim Stitou is appointed as managing director with sole power of representation of ATLAS Maschinen GmbH.

2015

#### **INNOVATION 3**

ATLAS delivers the first electric excavator with many more to follow.

The newly founded ATLAS Group Services GmbH now provides all training courses, which take place at the in-house training center.

The name of the company is changed from ATLAS Maschinen GmbH to ATLAS GmbH.

2020

#### **READY FOR THE FUTURE**

ATLAS presents the first battery-powered excavator. The 200 MH accu is used in recycling for Stadtreinigung Hamburg.

Effective immediately, ATLAS machines are equipped with a stage V exhaust after-treatment system.

ATLAS manufactures driver's cabs in-house.

2023

#### **NEW BRAND IDENTITY**

ATLAS modernizes its branding, revises the type designations ZW, MH, wheeled, and cranes, and enhances its profile to be well prepared for the future.

2023

#### **4<sup>TH</sup> GENERATION**

With the launch of the xxx.4 cranes, all units to be sold into the European economic market now comply with the new norm EN 12999:2020.

2025

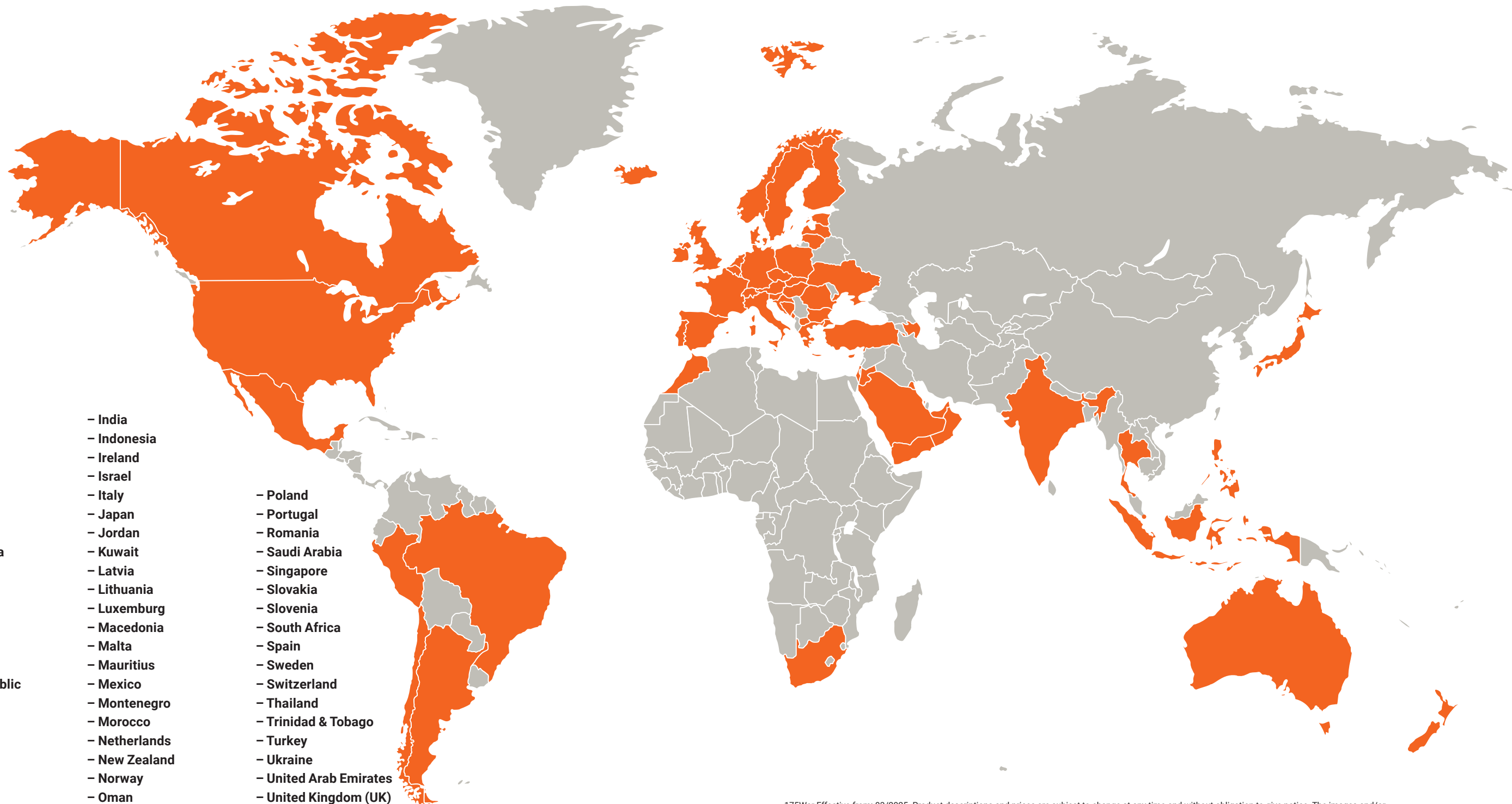
#### **LIFTING MAN BASKETS**

ATLAS cranes can be equipped and operated with lifting man baskets. They comply with the latest version of the norm DIN EN 280, which stipulates the highest safety standards and places special emphasis on functional safety.

**INNOVATIVE.  
PASSIONATE.  
PIONEERING.  
SINCE 1919.**



# OUR STRONG DEALER NETWORK.



- Argentina
- Australia
- Austria
- Azerbaijan
- Bahrain
- Belgium
- Bosnia and Herzegovina
- Brazil
- Bulgaria
- Canada
- Chile
- Croatia
- Cyprus
- Czech Republic
- Denmark
- Estonia
- Finland
- France
- Germany
- Greece
- Hungary
- Iceland
- India
- Indonesia
- Ireland
- Israel
- Italy
- Japan
- Jordan
- Kuwait
- Latvia
- Lithuania
- Luxemburg
- Macedonia
- Malta
- Mauritius
- Mexico
- Montenegro
- Morocco
- Netherlands
- New Zealand
- Norway
- Oman
- Peru
- Philippines
- Poland
- Portugal
- Romania
- Saudi Arabia
- Singapore
- Slovakia
- Slovenia
- South Africa
- Spain
- Sweden
- Switzerland
- Thailand
- Trinidad & Tobago
- Turkey
- Ukraine
- United Arab Emirates
- United Kingdom (UK)
- USA
- Yemen

175Wsr Effective from: 03/2025. Product descriptions and prices are subject to change at any time and without obligation to give notice. The images and/or drawings contained in this document are for illustrative purposes only and may differ from the standard version of the product. For instructions on proper use of this equipment, please refer to the corresponding operating manual. Failing to observe the operating manual when using our products or other negligent behavior may result in serious personal injury or death. The only warranty applicable to this product is the corresponding standard written warranty. ATLAS does not provide any warranty beyond this, neither explicitly nor implicitly. The designations of the listed products and services may be trademarks, service marks or trade names of ATLAS GmbH and / or their affiliates. All rights reserved. "ATLAS" is a registered trademark of Atlas GmbH.

Copyright © 2025 ATLAS GmbH.





#### **GANDERKESEE FACTORY**

ATLAS GmbH  
Atlasstrasse 6  
27777 Ganderkesee, Germany  
T: +49 (0) 4222 954 0  
F: +49 (0) 4222 954 220  
info@atlasgmbh.com  
www.atlasgmbh.com

#### **VECHTA FACTORY**

ATLAS GmbH  
Theodor-Heuss-Str. 3  
49377 Vechta, Germany  
T: +49 (0) 4441 954 0  
F: +49 (0) 4441 954 299  
info@atlasgmbh.com  
www.atlasgmbh.com

#### **DELMENHORST FACTORY**

ATLAS GmbH  
Stedinger Strasse 324  
27751 Delmenhorst, Germany  
T: +49 (0) 4221 49 10  
F: +49 (0) 4221 491 443  
info@atlasgmbh.com  
www.atlasgmbh.com

#### **ENGLAND LOCATION**

ATLAS Cranes UK Ltd.  
National Sales & Service Facility  
Wharfedale Road,  
Euroway Trading Est.  
Bradford, England BD4 6SL  
United Kingdom  
T: +44 (0) 1274 900 900  
atlasuk@atlas-cranes.co.uk  
www.atlas-cranes.co.uk